
Installation Instructions for JMP Clinical 8

These instructions describe the process for downloading and installing JMP Clinical 8 on your Windows desktop machine. These instructions include two major sections:

1 Download the Software

JMP Clinical 8 is downloaded using a small utility program called the SAS Download Manager. You will first download and install the SAS Download Manager and then run the Download Manager to download the installation files for JMP Clinical 8 as described in [“Step 1: Download and Run the SAS Download Manager Application,”](#) p. 4.

The installation files are placed in a folder known as the SAS Software Depot. The SAS software Depot is large (almost 10 Gigabytes), and it might take several hours for the SAS Download Manager to complete the download process.

Note: Depending on your analysis needs, you might not need all of the SAS software components that are included in the standard JMP Clinical installation. In this case, you can exclude those components and reduce the size of the install package that is downloaded. See [Appendix 2: Installing a Minimal Version of JMP Clinical](#) for instructions on modifying your JMP Clinical installation and getting the additional *Recipe* file that you will need.

2 Install the Software

Follow the instructions detailed in [“Step 2: Install JMP Clinical Software,”](#) p. 14.

3 Appendixes

Appendixes provide instructions and suggestions for managing atypical installations and situations.

[Appendix 1: Installing JMP Clinical from DVD](#)

[Appendix 2: Installing a Minimal Version of JMP Clinical](#)

[Appendix 3: Increasing the Memory Allocation for SAS Processes Run under JMP Clinical](#)

[Appendix 4: Reconfiguring JMP Clinical for Use with Non-English Operating Systems](#)

Before installing JMP Clinical, you should note the following important items:

- A SAS software depot can be used by multiple users. If there are multiple JMP Clinical users at your site, either the site administrator or a designated user should download the software (either electronically or from the DVDs) to a single SAS software depot. This

depot should be located on a network server that is accessible to every user. Registered users can then use that single depot to install the software on their local machines.

- You should keep at least one copy of your SAS software depot, in case you need to re-install the software again in the future.
- You must have 64 bit JAVA 8 or later installed on the 64-bit client machine before installing JMP Clinical. Software can be downloaded from the Oracle website (<https://www.oracle.com/technetwork/java/javase/downloads/jre8-downloads-2133155.html>). Download version *Windows x64* for if you are running JMP Clinical on a 64-bit machine. Download version *Windows x86* for if you are running JMP Clinical on a 32-bit machine.

Note: JMP Clinical requires the version of JAVA must match the bitness of your machine.

Before You Install JMP Clinical 8

- ☞ Terminate all non-essential applications.
- ☞ If the SAS Job Spawner is running as a service, it must be disabled.
- ☞ Disable any anti-virus software that might be running.

If you are upgrading from JMP Clinical 5.1 or earlier to JMP Clinical 8, you **should uninstall** the prior version before installing the new software. If you are upgrading from JMP Clinical 7 to 8, there is no need to uninstall JMP Clinical 7.

Note: If you opt to keep JMP Clinical 7.x on your machine, you might need to run the installer twice. The first installation updates your existing SAS components, the second installs the new version of JMP Clinical.

To Uninstall JMP Clinical Software:

- ☞ Launch the Uninstall Utility
 - In Windows 10, for example, open a Windows Explorer window. Click **Computer** on the Menu bar. Click Uninstall or change a program.
- ☞ Use the utility to uninstall SAS 9.3 (or 9.4).
- ☞ You should also delete the SASHome directory located in the C:\Program Files directory.

Description of Your Package

Electronic Delivery

After you submit your signed paperwork for JMP Clinical 8, you will receive an email listing your site’s order number, an installation key code specific to this order and contact information for SAS Technical support.

Your Order Information:

Order Number:	Your Order Number	
SAS Installation Key:	Your Installation Key	
Deployment Type:	Planned (Deployment plan needed)	
Date:	October 28, 2020	
Space Required for SAS Software Depot:	11.3GB	
Software Status:	Pre-production	
SAS Installation Representative:	Email Address	Tech Support Site Number
	Your Email Address	Your Tech Support Site Number

Information for Tech Support Site 70174085:

Site Name:	Your Site Name
Tech Support Site Number:	Your Tech Support Site Number
Contracts Site Number:	Your Contracts Site Number
Operating System:	Microsoft® Windows® Workstation for x64
Internal Reference:	SAS 9.4 TS1M7, Rev. 940_20w47
License File:	Your License File
Product(s) Ordered	
Base SAS	
JMP Clinical	
SAS Enterprise Guide	

Information for Tech Support Site 70228324:

Site Name:	Your Site Name
Tech Support Site Number:	Your Tech Support Site Number
Contracts Site Number:	Your Contracts Site Number
Operating System:	Microsoft® Windows® for x64
Internal Reference:	JMP 15.2 TS1M7, Rev. 940_20w47
License File:	Your License File
Product(s) Ordered	
JMP for Clinical	

DVD Delivery

In some cases, you can choose to receive JMP Clinical on DVD. See [“Appendix 1: Installing JMP Clinical from DVD,” p. 28](#) for specific instructions for installing JMP Clinical from DVD.

Step 1: Download and Run the SAS Download Manager Application

You will NOT need to install the SAS Download Manager if:

- Your IT administrator has already done so. You will need to know the location of the SAS software depot. You should skip Step 1 and proceed directly to [“Step 2: Install JMP Clinical Software,” p. 14.](#)

You will need to install the SAS Download Manager if:

- You are a single user of JMP Life Sciences software.
- You are an IT administrator managing the software for multiple users.

The email listing your site’s order number and installation key code will also contain a link (circled below) to the SAS Download Manager. The SAS Download Manager application must be downloaded and used to generate a local SAS Software Depot before JMP Clinical 8 can be installed.

Your Deployment Instructions:

For a video overview about the SAS 9.4 installation and configuration process, please visit <http://support.sas.com/sas94-install-videos>.

When you are ready to deploy your SAS software, follow these instructions:

1 Download the SAS Download Manager.

<http://image1.unx.sas.com/tools/esdclient/>

The SAS Download Manager is the application you must use to download your software.

NOTE: If you are a Cary Install Depot user, then you do NOT need to download and install the SAS Download Manager application; just use the "Download" links on the Custom Order tab.

If you are a remote user, then follow the above link to download and install the SAS Download Manager. Then go to: <http://image1.unx.sas.com/preferences/> and change your esdClientWin value using the example provided on the page. Using the "Download" links on the Custom Order tab will now result in much better performance because you will be using the local copy of the SAS Download Manager instead of invoking an application across a remote connection.

2 Download your SAS software using the SAS Download Manager.

When you are ready to begin downloading your software, follow the instructions in the readme file from the download site to start the SAS Download Manager. When prompted, provide the following information to the SAS Download Manager:

- **Order number:** *Your Order Number*
- **SAS installation key:** *Your Installation Key*

When the download process is complete the SAS Download Manager will have created a SAS Software Depot, the repository for your SAS software, in the location you indicated in the SAS Download Manager dialogs. In addition, the installation process creates a depotsummary.html document at the root of your SAS Software Depot that describes the contents of the depot.

3 Install your SAS software.

Follow the instructions in the *QuickStart Guide: SAS® 9.4 Planned Deployment using Electronic Software Delivery*. The QuickStart Guide describes how to obtain a deployment plan, which is an XML-based description of the topology of the intended final SAS software deployment for your system. The QuickStart Guide also explains how to access any ReadMe documents that contain information required for deployment of your software. To locate the QuickStart Guide, select the appropriate link on your depotsummary.html described in Step 2 or use this link: <http://support.sas.com/qsgedplan94.html>.

Note: The process of downloading your software from SAS should not be used as a mechanism for distributing your software across your organization. The SAS download site will limit the number of downloads that may be performed per order. If you need to distribute the software image internally, download it to a networked location that is available to all systems where the software needs to be installed. Alternately, you can create your own media from your downloaded image using the tools provided. The installation of either internal distribution method is subject to your number of licensed users or copies.

-
- ☞ Click the link in step 1 of the emailed instructions (circled above) to open the download window in your web browser.
 - ☞ Click on the link to the appropriate **SAS Download Manager** and select your Windows platform. In this example, we are installing 64-bit JMP Clinical 8 on a Windows 10 machine. Therefore, we chose Microsoft Windows for x64

Tools > SAS Download Manager

The SAS Download Manager is a Java-based client that can access the SAS software repository in order to download selected SAS orders. The JRE required by the SAS Download Manager is included with the download below. The SAS Download Manager, once fully extracted, requires approximately 30MB of space to run. It is not necessary to download the application to the same location you intend to eventually install your SAS software order. The location where you install the SAS Download Manager should have external access to the internet.

Latest Validated Installers

Platform	Size	Updated	Download
64-bit Enabled HP-UX	62 MB	07Aug20	esdclient_93540_h64_xx_web_1
HP-UX IPF	125 MB	07Aug20	esdclient_94548_h6i_xx_web_1
Linux for x64	61 MB	07Aug20	esdclient_94548_lax_xx_web_1
Linux	48 MB	07Aug20	esdclient_93540_lnx_xx_web_1
Macintosh	65 MB	07Aug20	esdclient_94548_mac_xx_web_1.dmg
64-bit Enabled AIX	160 MB	07Aug20	esdclient_94548_r64_xx_web_1
64-bit Enabled Solaris	66 MB	07Aug20	esdclient_94548_s64_xx_web_1
Solaris for x64	64 MB	07Aug20	esdclient_94548_sax_xx_web_1
Windows	45 MB	07Aug20	esdclient_94548_wiri_xx_web_1.exe
Microsoft Windows for x64	45 MB	07Aug20	esdclient_94548_wx6_xx_web_1.exe
z/OS	17 MB	07Aug20	esdclient_94548_mvs_xx_web_1.zos

Go back to [Install Depot Support Tools](#).

README: [Documentation for SAS Download Manager Web Downloads](#)

Note: The documentation files at this location will require a registration profile for access.

- Click the link in the **Download** column to request the download for the desired platform. A window might open asking you to log on to your SAS Profile.

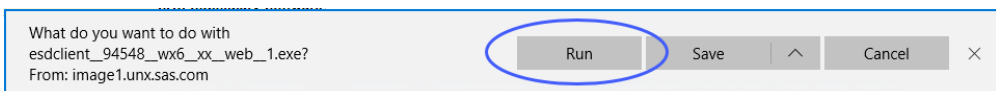
SAS Login

✎ Either log on to your existing SAS Profile or create a new Profile.

You must read and accept the SAS License agreement to proceed further.

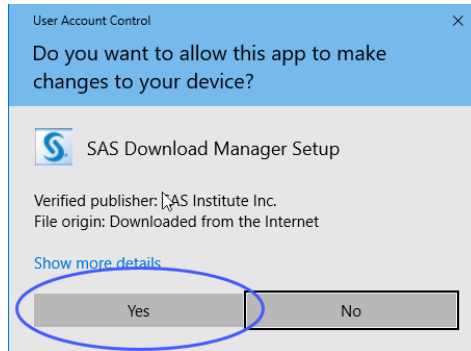
✎ Click to proceed.

The SAS Download Manager application is downloaded into the Downloads folder of your computer.



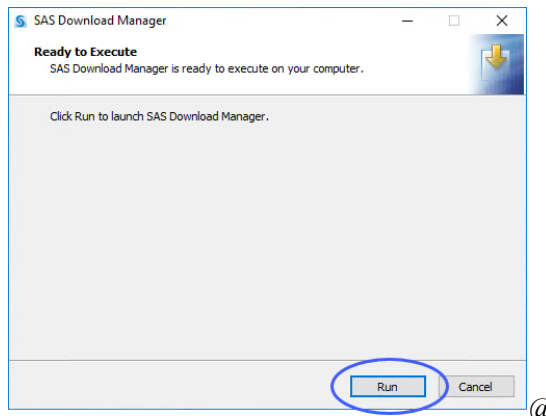
Click **Run**.

A window asking you to allow the SAS Download Manager to modify your computer will open.



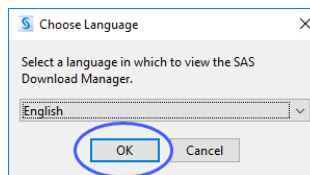
Click **Yes**.

A window asking you to launch the SAS Download Manager will open.



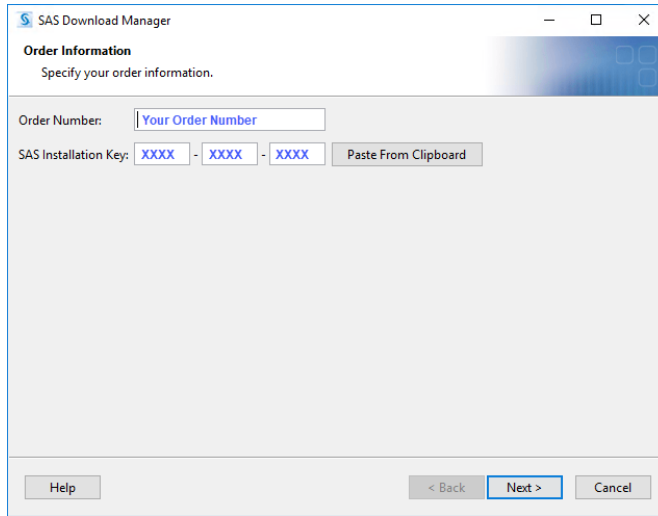
Click **Run**.

A window asking you to specify the language of your installation will open.



Select **English** and click **OK**.

Enter your order number and installation key (from the email) in the text fields.



☞ Click Next.

☞ Examine the order details.

SAS Download Manager

Specify Order Details
Edit the description and add notes for this order to aid with future tracking.

You must install your software from a SAS Software Depot, and this is the first step in creating a SAS Software Depot or adding software to one from media you have created. Review the contents of the order you are working with. You can create a custom description and notes to differentiate this order from others in your SAS Software Depot.

Order number:

Description:

Notes:

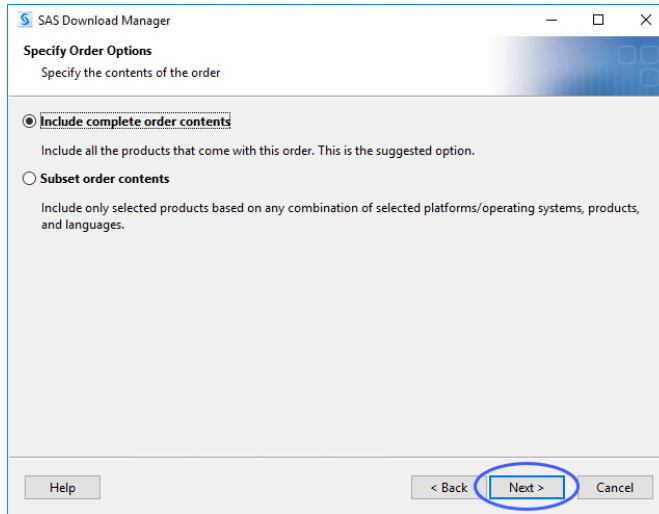
[Click to see the contents of your order that correspond with the SAS Products to Include below](#)

SAS Products to Include in the SAS Software Depot:

1. BASE Infrastructure to support Hadoop
2. Base SAS
3. DataFlux API for Hadoop
4. GfK GeoMarketing CITIES Maps for SAS/GRAPH
5. GfK GeoMarketing WORLD Maps for SAS/GRAPH
6. International Component for Unicode
7. JMP Clinical
8. Report Fonts for Clients
9. SAS Client Connection Profile Configuration
10. SAS Deployment Tester - Client
11. SAS Diagram Control
12. SAS Drivers for JDBC
13. SAS Drivers for ODBC
14. SAS Enterprise Guide
15. SAS High-Performance Server
16. SAS High-Performance Statistics Server Components
17. SAS Hive SerDe for SPDE Data
18. SAS Integration Technologies Client
19. SAS Intelligence Platform Object Framework
20. SAS Interface to Viya Model Publishing and Scoring
21. SAS Management Console
22. SAS ODS Graphics Designer
23. SAS ODS Graphics Editor
24. SAS PC Files Server
25. SAS Personal Login Manager
26. SAS Providers for OLE DB
27. SAS Remote Browser Server
28. SAS Scalable Performance Data Client
29. SAS Scalable Performance Data Server Plug-in for SAS Management Console
30. SAS Studio - Single User
31. SAS Studio Basic
32. SAS Threaded Kernel Extensions for Data Mining
33. SAS Universal Viewer
34. SAS Web Application Server
35. SAS XML Mapper
36. SAS/ACCESS Interface to PC Files
37. SAS/GRAPH
38. SAS/GRAPH ActiveX Control
39. SAS/GRAPH Java Applets for Web Servers
40. SAS/GRAPH Obsolete Maps Data
41. SAS/IML
42. SAS/SECURE Client Components
43. SAS/SECURE Toolkit Libraries from RSA (R)
44. SAS/STAT
45. Standalone Formats

Help < Back **Next >** Cancel

☞ Click Next.



☞ Make sure that **Include complete order contents** is selected.

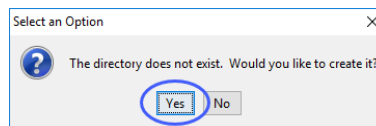
Note: If you plan to install the standard version of JMP Clinical proceed with the installation as follows. You can reduce the size of the SAS Software downloaded from 11.6 GB to 8 GB by subsetting the order contents. If you opt to subset, click **Subset order contents** and proceed as directed in [*Appendix 2: Installing a Minimal Version of JMP Clinical.*](#)

☞ Click **Next**.

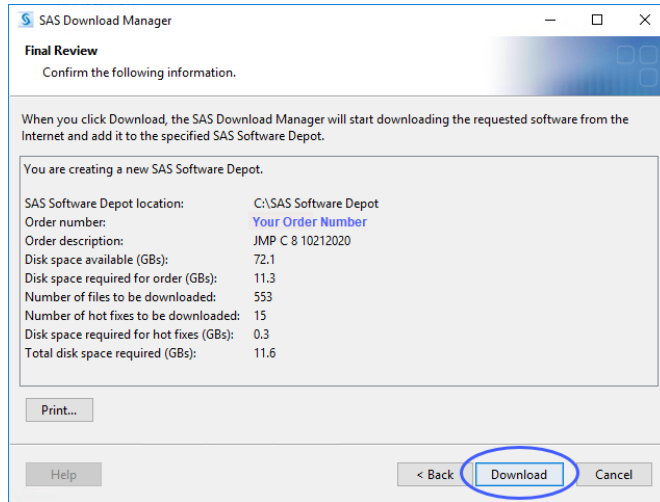
☞ Specify where the software depot is to be installed.

By default, the software depot is installed to the C:\SAS Software Depot directory. If this directory does not exist, it is created for you. You can accept the default location or specify an alternate location.

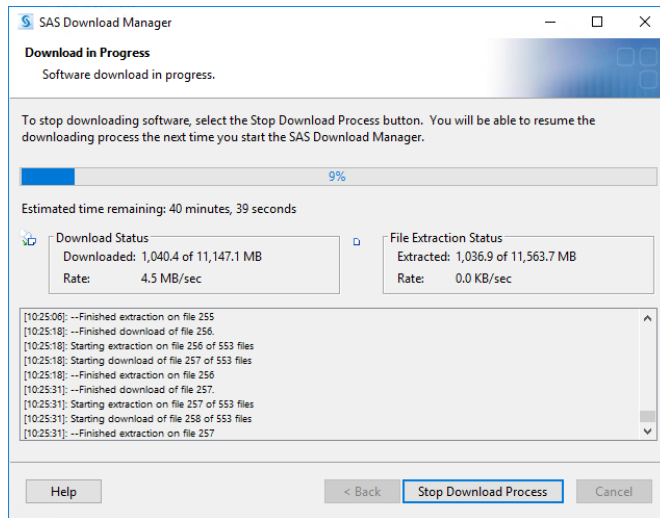
☞ If prompted, click **Yes** to create a directory for the Software Depot.



☞ Review the install information.

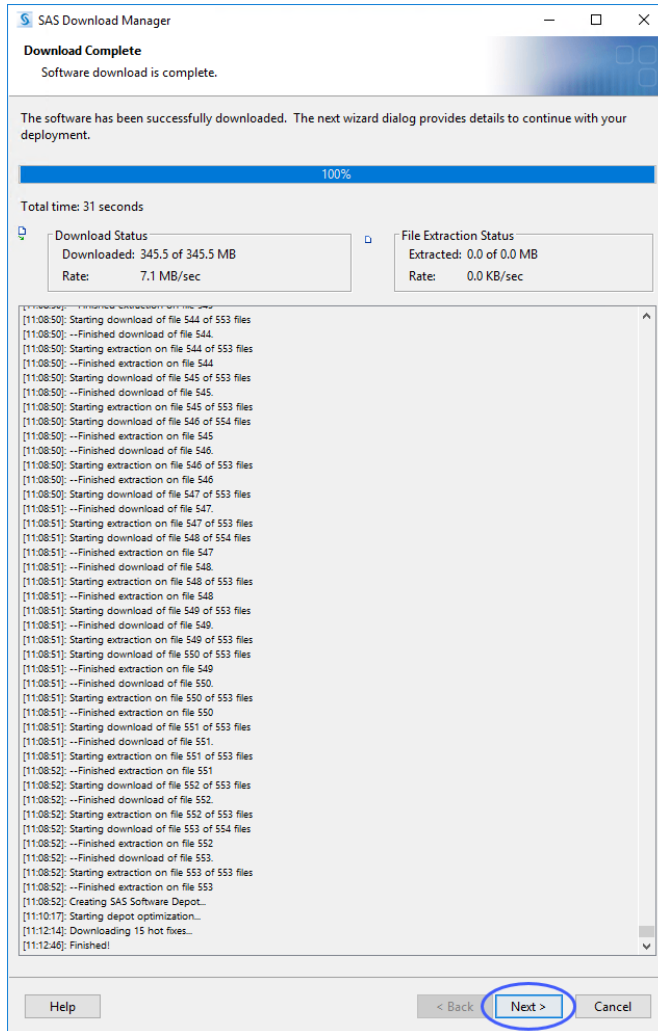


☞ Click **Back** if you need to make any changes. Otherwise, click **Download**. The download process begins. You must wait for this process to complete.

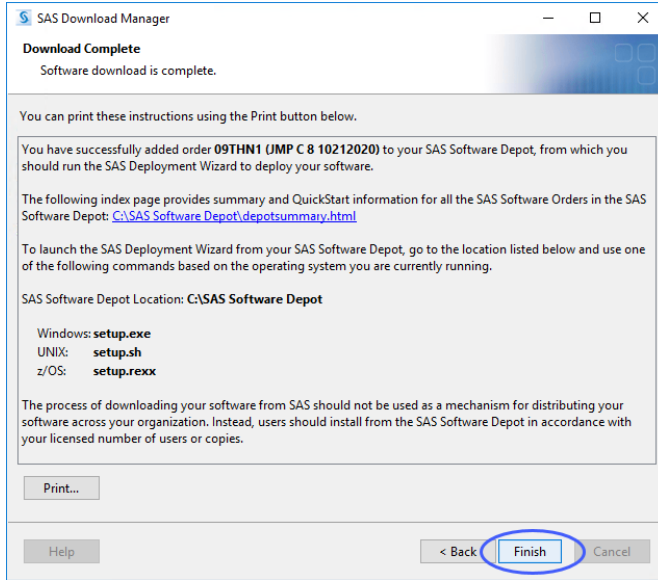


Note: This process can take an extended time.

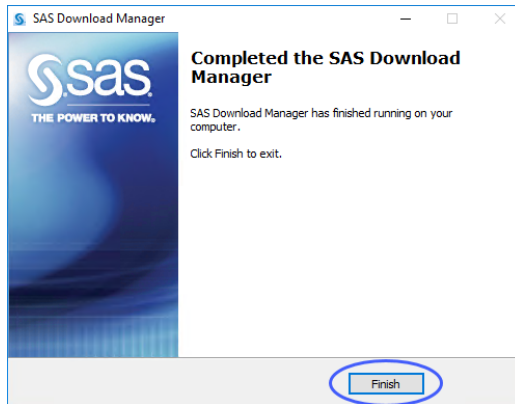
When the download process is complete, the **Next** button is surfaced.



☞ Click Next.



☞ Click **Finish**.



☞ Click **Finish**.

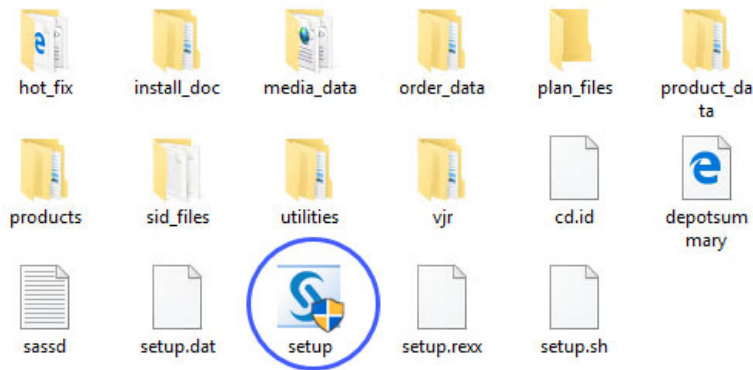
☞ Proceed to [“Step 2: Install JMP Clinical Software,” p. 14.](#)


Step 2: Install JMP Clinical Software

Step 2a: Determine the location of the SAS Software Depot containing the JMP Clinical software to be installed.

By default, the location of the depot is C:\SAS Software Depot.

Step 2b: Open the SAS Software Depot.

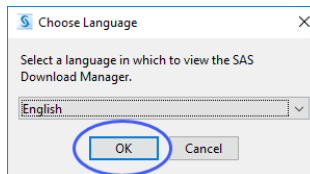


☞ Double-click on the setup icon () to open the application.

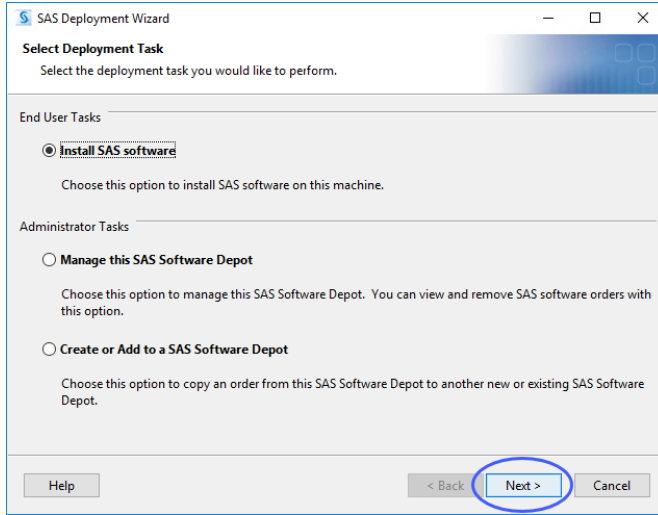
☞ Proceed to Step 2c.

Step 2c: Installation

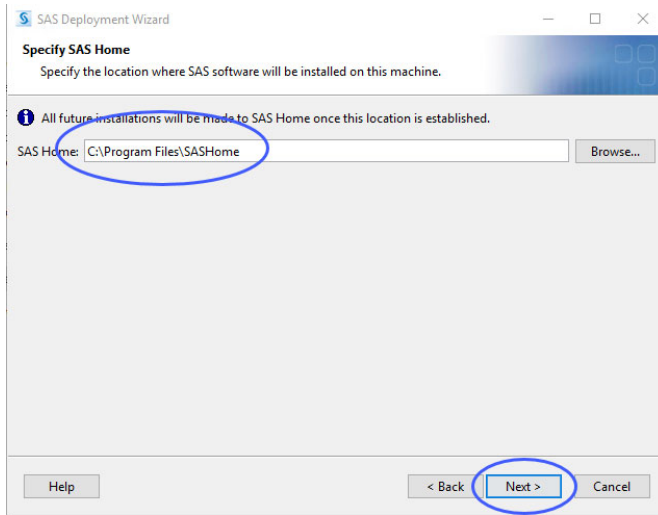
☞ Select **English** as the language that you want to view the SAS Deployment Wizard to display and click **OK**.



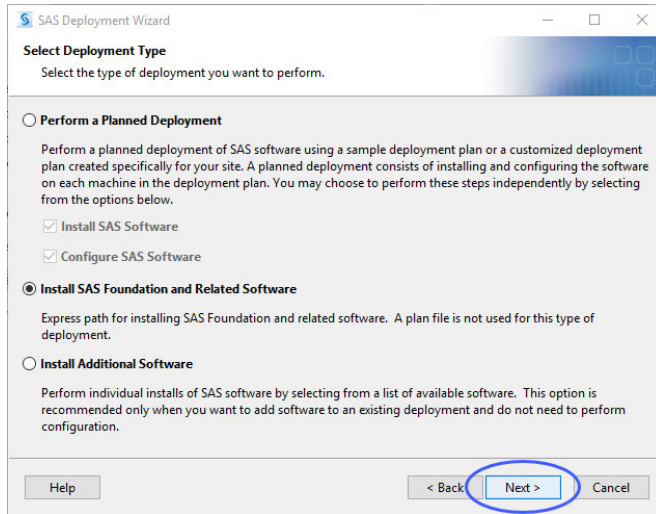
☞ Select **Install SAS Software** and click **Next**.



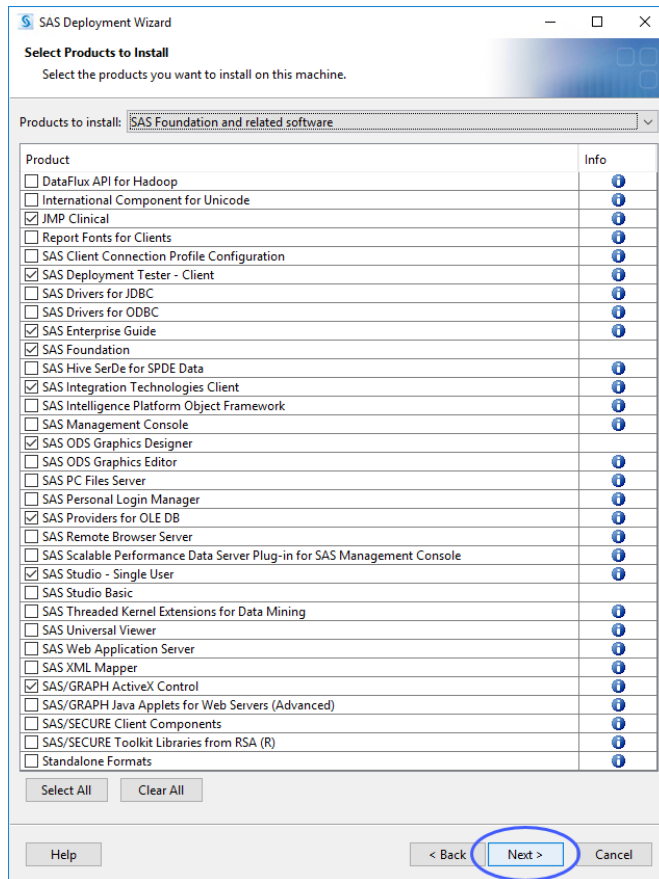
☞ Specify the location for your software and click Next.



☞ Select **Install SAS Foundation and Related Software** and click Next.



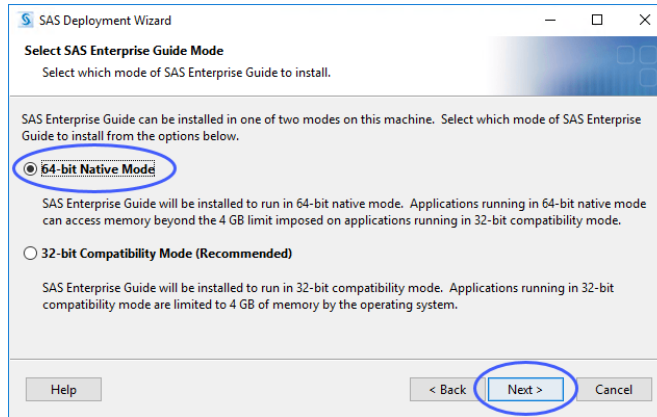
The list of software to be installed is shown.



☞ Make no changes to the selections.

☞ Click Next.

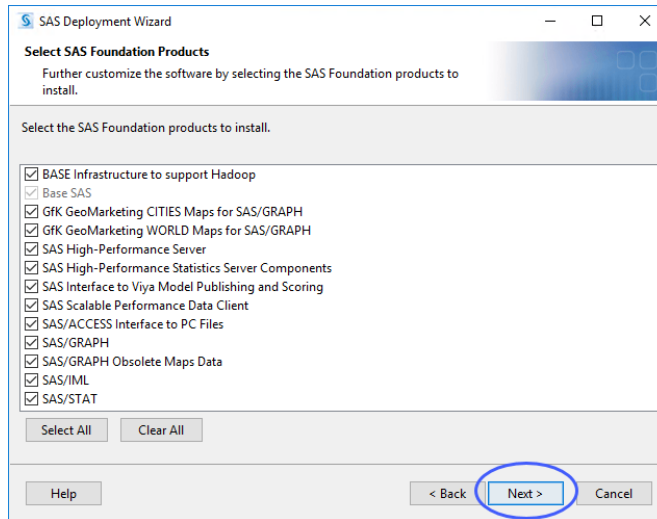
The SAS Enterprise Guide options to be installed are displayed.



☞ Make sure 64-bit Native Mode is selected..

☞ Click Next.

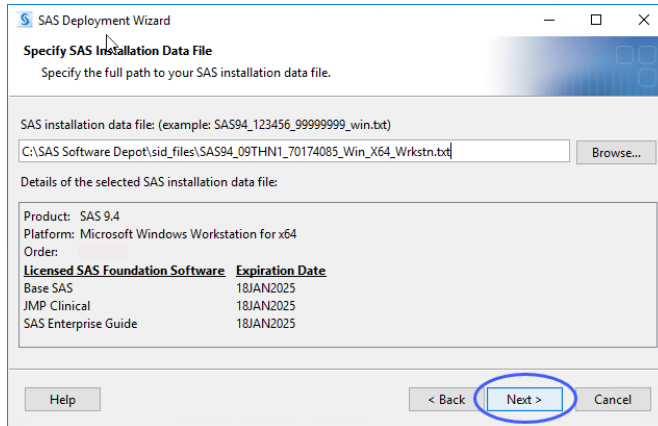
The SAS Foundation Products to be installed are displayed.



☞ Make no changes.

☞ Click Next.

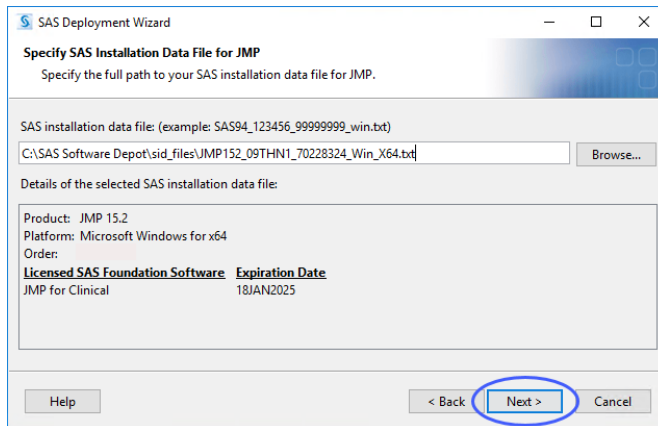
The name and path to SAS installation data file are displayed.



☞ Make no changes.

☞ Click **Next**.

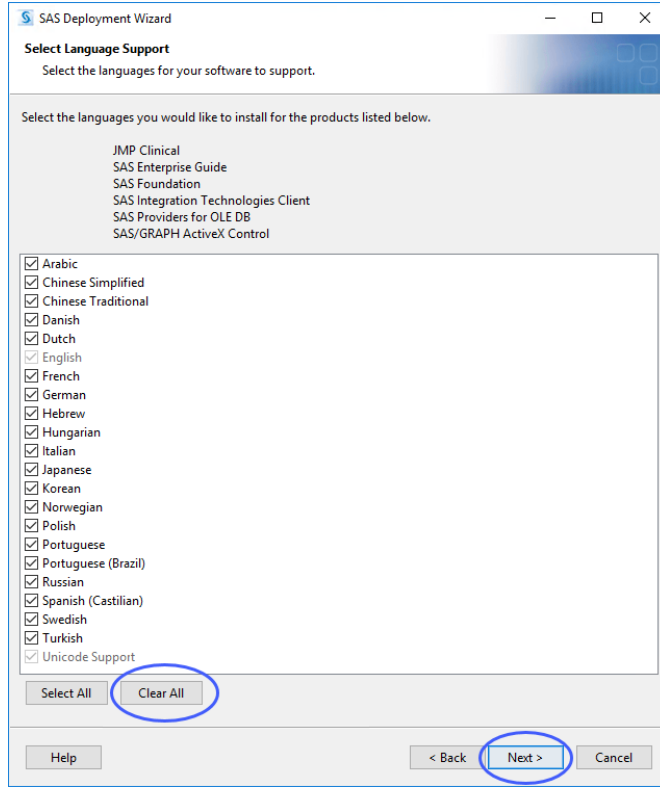
The name and path to **JMP** installation data file are displayed.



☞ Make no changes.

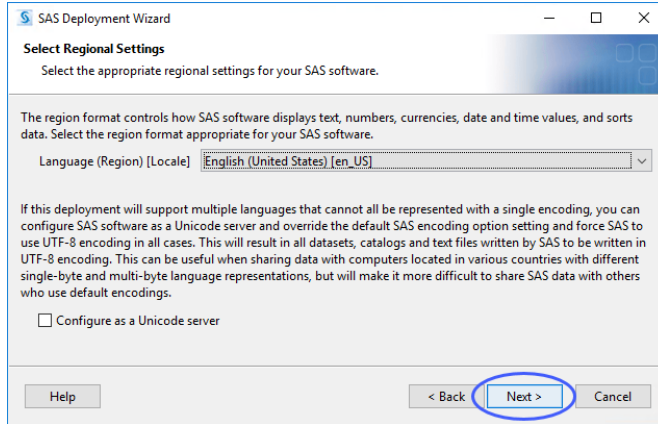
☞ Click **Next**.

The list of language support files to be installed is shown.



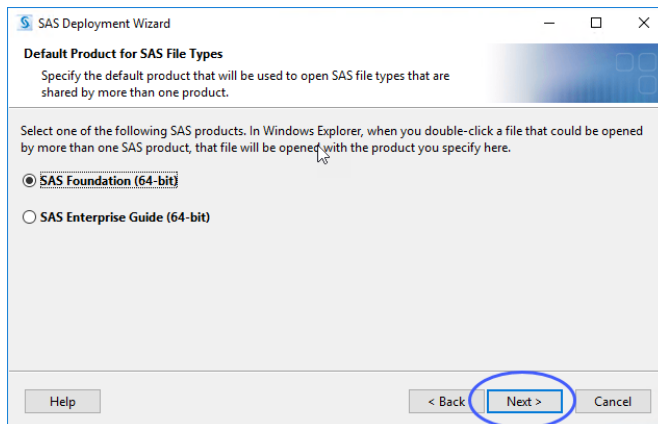
Note: JMP Clinical is currently supported for English, Chinese, and Japanese. You can install Chinese and/or Japanese if needed. To save hard disk space, all other languages should be unchecked.

- ☞ Click **Clear All** to deselect all languages except for English and Unicode.
- ☞ Check Chinese Simplified and/or Japanese, if desired.
- ☞ Click **Next**.
- ☞ Make sure the regional settings are as shown below:



☞ Click **Next**.

You are asked to select the default SAS product to be used to open SAS file types.



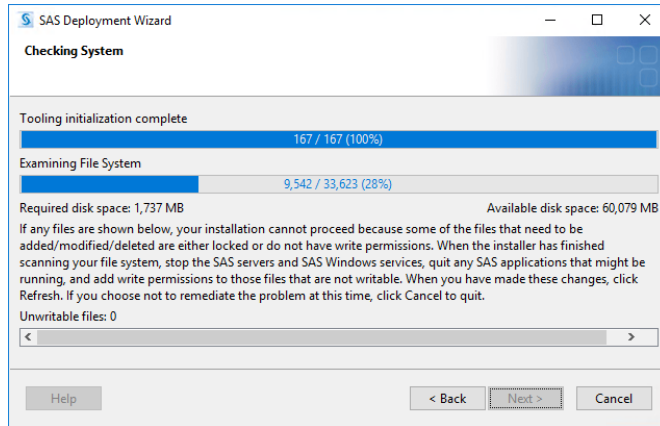
☞ Make no changes.

☞ Click **Next**.

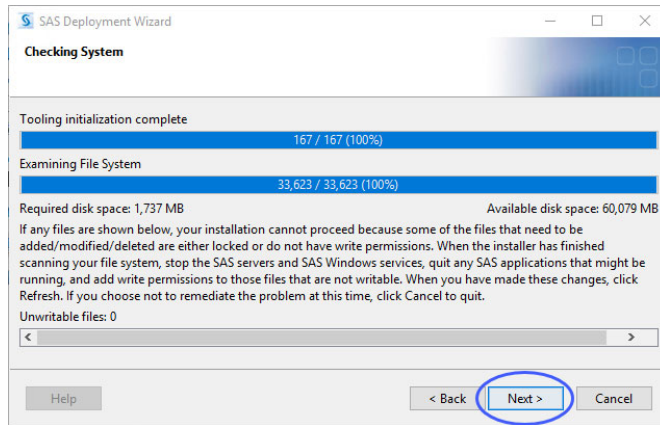
The Installer begins by checking your system for required components. You must wait for this process to complete.

Note: This process can take an extended time.

Note: JMP Clinical requires Microsoft .Net Framework 4.8 software to be installed . This package can be downloaded from <https://www.microsoft.com/en-us/download/details.aspx?id=49981>.



☞ Click **Next** when the System Check is complete.



☞ Examine the Deployment Summary.



☞ Click **Start** to begin the installation.

You might be required to reboot your machine one or more times during the installation. You will need to restart the installation after each reboot.

As each component is successfully installed, a green check mark appears.

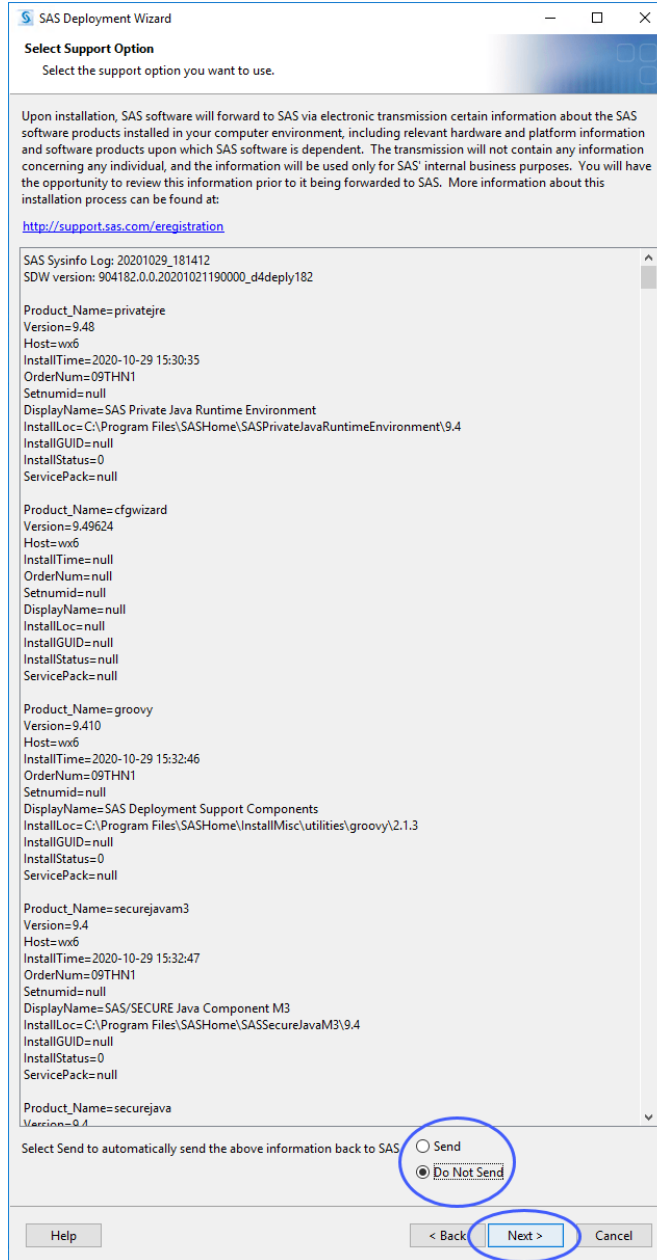


The Next button becomes active when the installation is complete.

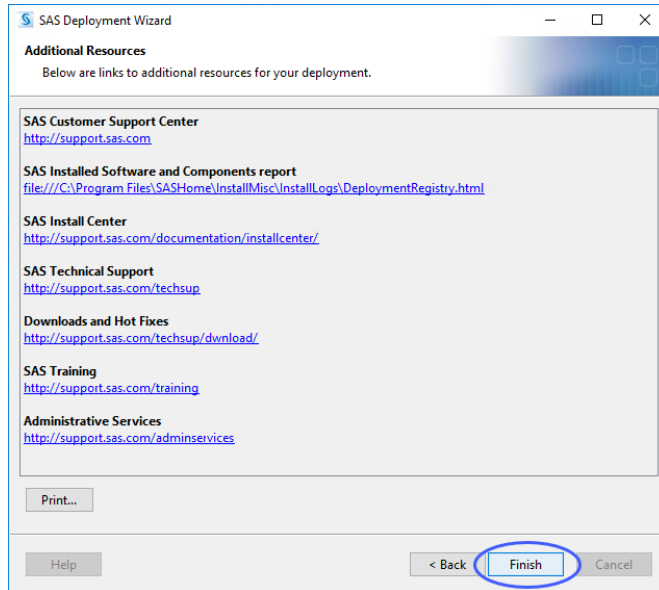


☞ Click Next.

☞ Specify whether you want to allow information about hardware, platform, and installed products transmitted to SAS.



☞ Click Next.



☞ Click **Finish** to complete the installation and close the Deployment Wizard.

Note: If you plan to perform an installation qualification for JMP Clinical, you must do it now, before you launch JMP Clinical for the first time. Refer to the *JMP Clinical Installation Qualification and Operation Qualification (IQ/OQ)* guide for more details.

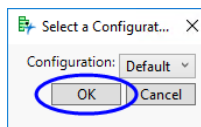
Step 2d: Verify that JMP Clinical has been successfully installed.

☞ Click **Start > All Programs > SAS > JMP Clinical 8** to open JMP Clinical.

The first time you open JMP Clinical, you might be asked to register your software. Follow the instructions to register your software.



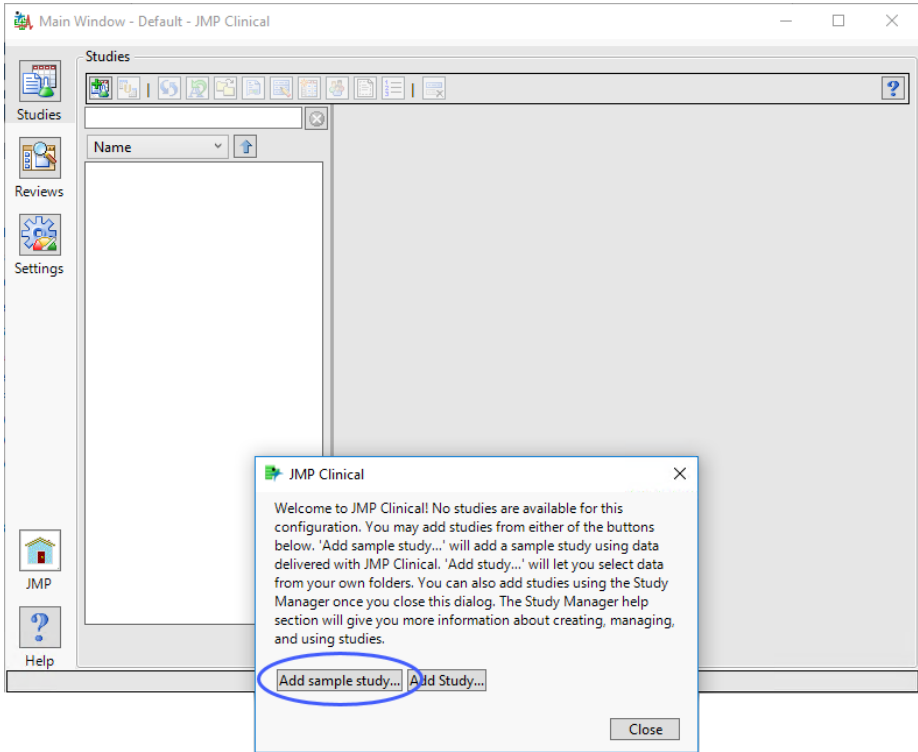
You will be asked to select a configuration.



☞ Select **Default** and click **OK**.

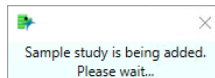
The Clinical Main Window will open. All JMP Clinical processes can be run from the Main Window. You will be prompted to add a study.

☞ Click **OK**.

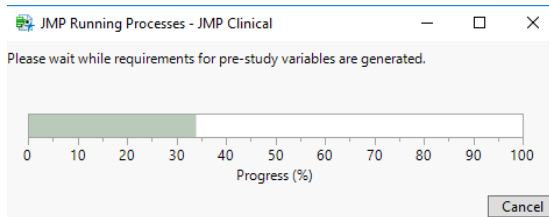


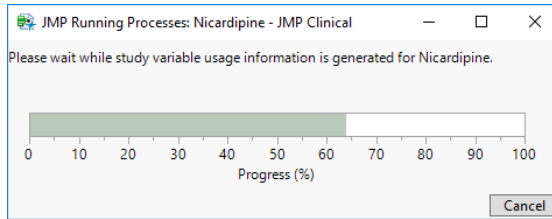
☞ Click **Add sample study...** to add the included Nicardipine study.

A window appears telling you the study is being added.

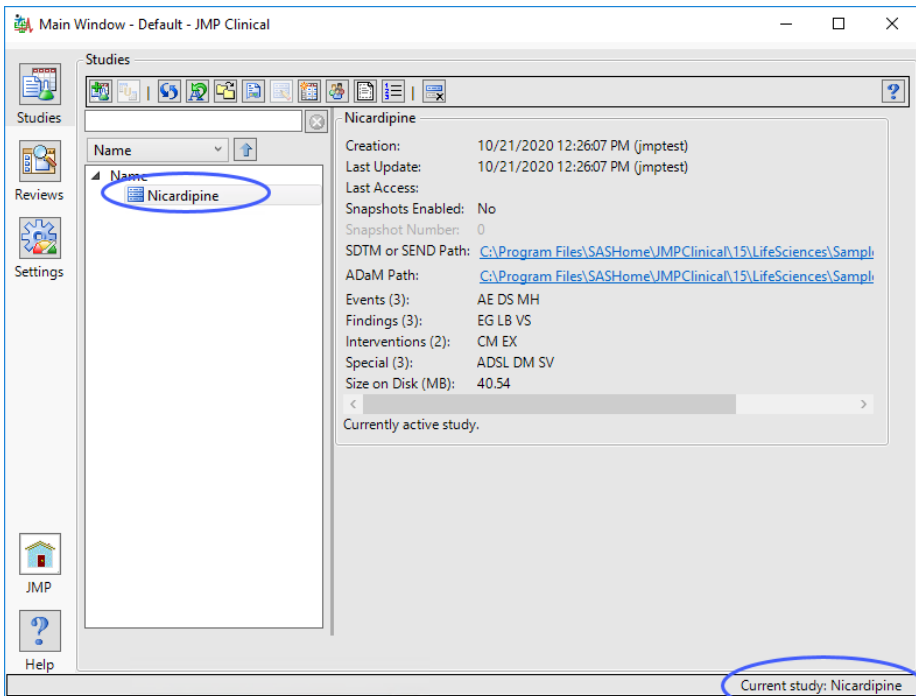


Once the study has been added, windows appear telling you the pre-study variables and variable usage information are being generated.





When these processes are complete, the Nicardipine study appears in the study list and is set as the current study.




You should run at least one process (**DM Distribution**, for example) using one of the sample settings to verify successful installation.

Appendix 1: Installing JMP Clinical from DVD

After you submit your signed paperwork for JMP Clinical 8, you will receive an installation package containing three DVDs. The DVDs contain both your software and the SAS Download Manager. The package also includes an information sheet listing your order number, an installation key code specific to your order and contact information for SAS Technical support. Installation of the SAS Software Depot from DVD is very similar to the web download described above, with some minor exceptions, and you should refer to this procedure for more details.

Installing the SAS Software Depot

- ☞ Insert the disk labeled **SAS Software Disk 1**.
- ☞ Navigate into the disk's directory and double-click on the setup icon () to open the application.
- ☞ Click **Yes** if you are prompted to run this file.

A window asking you to specify the language of your installation will open.

- ☞ Select the desired language and click **OK** to start the SAS Deployment Wizard.

You will be asked to select a deployment task.

- ☞ Select **Create or Add to a SAS Software Depot** and click **Next**.

Your order details should be specified automatically.

- ☞ Click **Next**.

- ☞ Make sure that **Include complete order contents** is selected and click **Next**.

By default, the software depot is installed to the C:\SAS Software Depot directory. If this directory does not exist, it is created for you. You should accept the default location unless there is a pressing need to place the software elsewhere.

Several windows will appear in succession

- ☞ Click **Next** (or **Yes**) in each window to continue
- ☞ Review the install information. Click **Back** if you need to make any changes. Otherwise, click **Start** to begin the installation.

Note: Installation of this software can take an extended time. You must wait for this process to complete.

During the installation, you will be prompted to change disks.

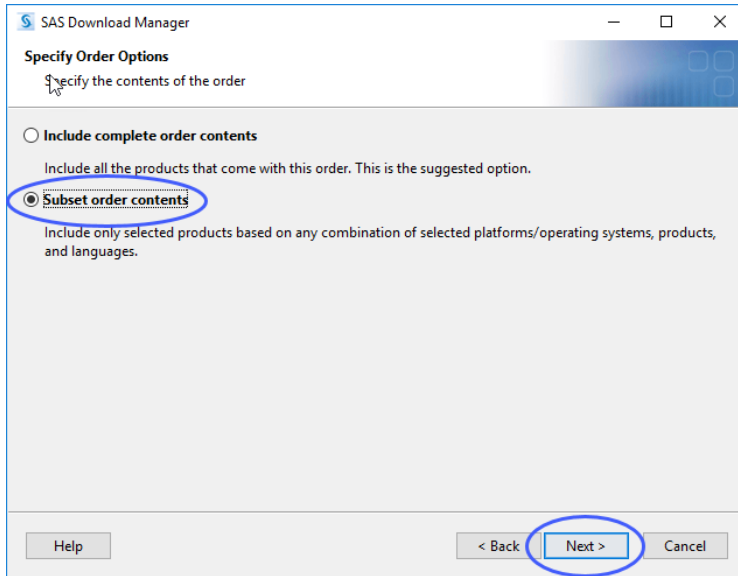
- ☞ As the installation continues, you will be prompted to change disks several times. Remove the current disk and insert the specified disk. Click **OK** to continue the installation.

When the download process is complete, the **Next** button is surfaced.

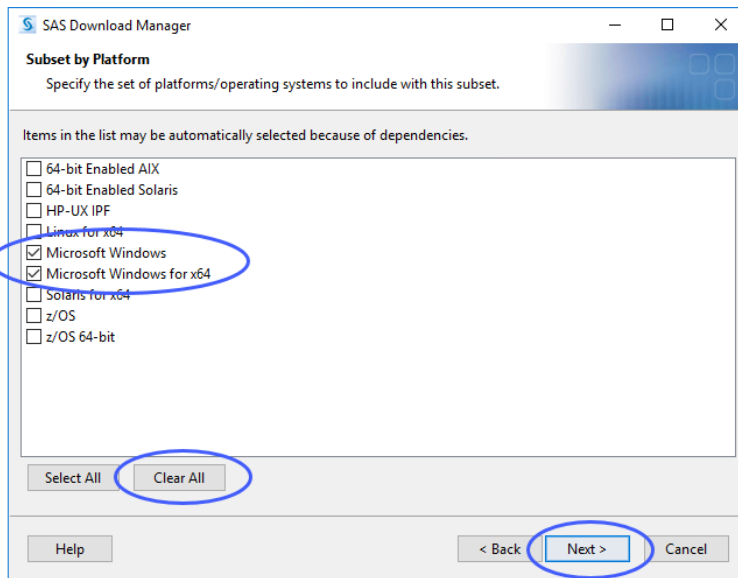
- ☞ Click **Next**.
- ☞ Click **Finish**.
- ☞ Proceed to [“Step 2: Install JMP Clinical Software,” p. 14.](#)

Appendix 2: Installing a Minimal Version of JMP Clinical

- ☞ Begin downloading the SAS Download Manager as described in [“Step 1: Download and Run the SAS Download Manager Application,” p. 4.](#)
- ☞ Click **Subset order contents** in the Specify Order Options window, as shown below.



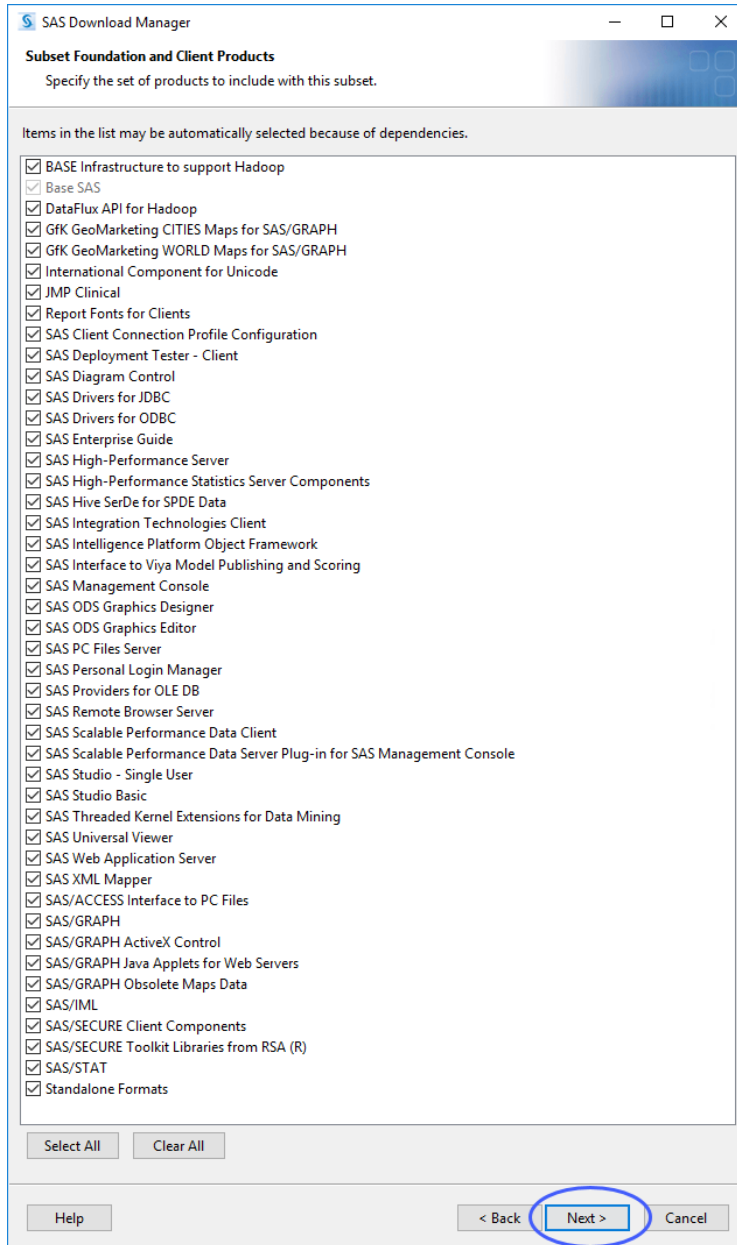
☞ Use the drop-down menu to specify **SAS Foundation and client products** and then click **Next**.



☞ Click **Clear All**.

☞ Select **Microsoft Windows** and **Microsoft Windows for x64**.

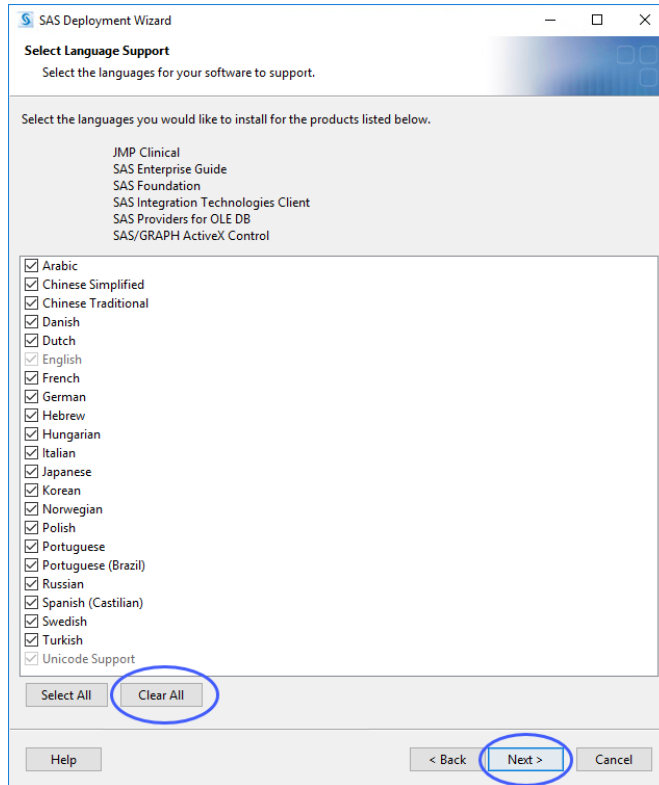
☞ Click **Next**.



☞ Make no changes to the product selection.

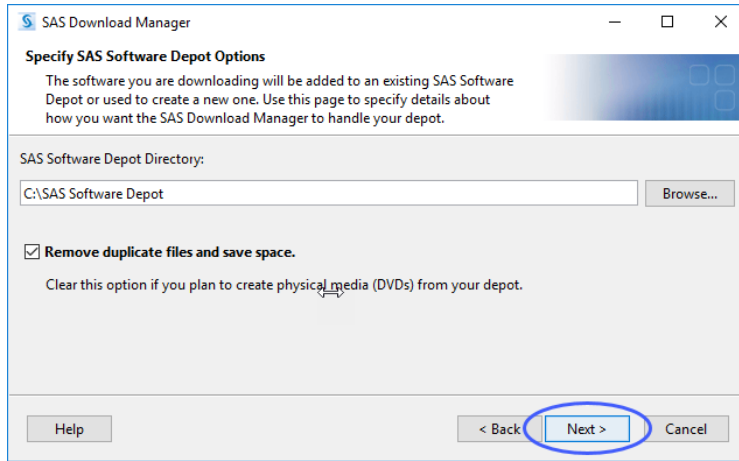
☞ Click **Next**.

The list of language support files to be installed is shown.



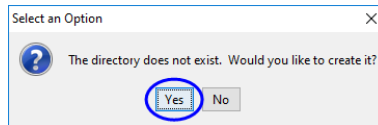
Note: JMP Clinical is currently supported for English, Chinese, and Japanese. You can install Chinese and/or Japanese if needed. To save hard disk space, all other languages should be unchecked.

- ☞ Click **Clear All** to deselect all languages except for English and Unicode.
- ☞ Check Chinese Simplified and/or Japanese, if desired.
- ☞ Click **Next**.

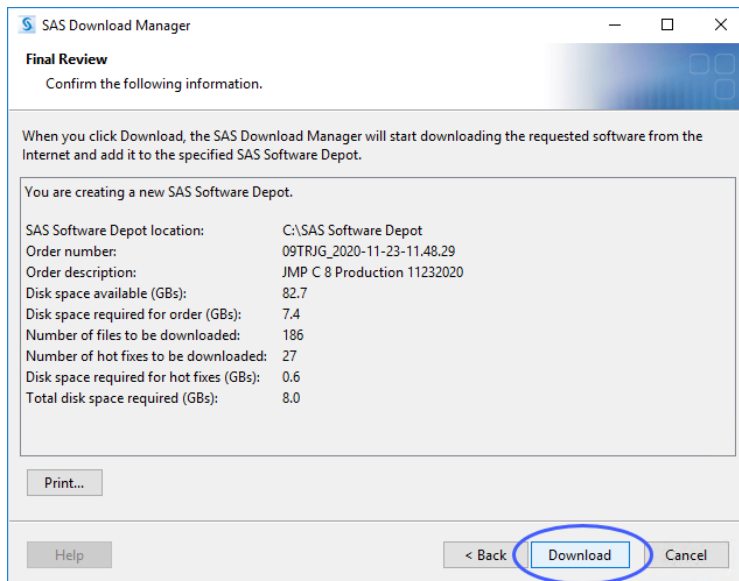


By default, the software depot is installed to the C:\SAS Software Depot directory. If this directory does not exist, it is created for you. You can accept the default location or specify an alternate location.

☞ If prompted, click Yes to create a directory for the Software Depot.



☞ Review the install information.



Note that the total disk space required for this install is 8 GBs. The disk space needed for a full install is 11.6 GBs. (See page 11.)

☞ Click **Back** if you need to make any changes. Otherwise, click **Download**.

The download process begins. You must wait for this process to complete. The download process proceeds as described on pp. 11-13.

☞ Proceed to [“Step 2: Install JMP Clinical Software,” p. 14.](#)

Appendix 3: Increasing the Memory Allocation for SAS Processes Run under JMP Clinical

While native JMP stores all data in memory, the SAS processes run by JMP Clinical use a combination of both memory and disk. The latter enables the system to handle very large data sets, but run times can sometimes be slow due to read and write speed to disk. If your computer has 4 gigabytes of memory or more and your data sets are 1 gigabyte or less, you can improve the performance of SAS runs by allocating more memory to SAS. Use the following steps:

☞ Close all JMP and SAS sessions.

☞ Navigate into the C:\Program Files\SASHome\SASFoundation\9.4\nls\en directory (or the directory in which SAS is installed).

☞ Create a backup copy of the SASV9.CFG file and save the backup to another directory.

Note: It is very important that you create this backup copy before making any modifications to the SASV9.CFG file. Changes to the SASV9.CFG file might prevent SAS from functioning properly. Having this backup will enable you to revert to the original configuration.

☞ Open the SASV9.CFG file using a text editor such as Notepad or TextPad.

☞ Scroll down through the file to the `-MEMSIZE 2G` line of code.

☞ Delete the `-MEMSIZE 2G` line of code and replace it with the following 4 lines of code:

```
-MEMLIB
-MEMSIZE 0
-MEMMAXSZ *G
-SORTSIZE *G
```

where * indicates the number of gigabits of RAM to allocate to SAS. A recommended amount for both `-MEMMAXSZ` and `-SORTSIZE` is $\frac{3}{4}$ of your total RAM. For example, if you have 8G of RAM, specify 6G for both of these options.

Caution: Do not exceed your machine’s available RAM. You must leave sufficient memory available for other processes. If a SAS process does exceed the memory limits you specify, you will see an error message in the SAS log such as "Out of Memory" or "Unable to Allocate Sufficient Resources". In such cases, you should remove the options above and let SAS use disk space to store large working data sets.

Appendix 4: Reconfiguring JMP Clinical for Use with Non-English Operating Systems

JMP Clinical can be run on computers running either an English or Chinese or Japanese-language operating system. Data consisting of words, symbols, or other elements from the same language as the specified OS only can be run without additional modifications. If you install JMP Clinical on Chinese or Japanese OS, your software should configure itself to use Unicode for both the SAS and JMP components.

- ☞ Download and install the SAS Software Depot as described previously.
- ☞ Install SAS as described previously. (See page 20.) When the installation is finished, make sure the language is set to U8 in the SASV9.CFG file.
- ☞ Navigate to C:\Program Files\SASHome\SASFoundation\9.4.

Note: This assumes you have installed SAS in the default location.

- ☞ Open the SASV9.CFG file using a text editor such as Notepad or TextPad. This file should contain only the following line of code:

```
<-CONFIG "C:\Program Files\SASHome\SASFoundation\9.4\nls\**\SASV9.CFG">
```

where ** is the two-letter language abbreviation.

- ☞ Change the language abbreviation to U8.

Save the change and close the file.

Note: Your data must be in U8 format if you are running JMP Clinical in a language other than English. To convert your data to U8, Use the **Convert Data Sets to U8 Format** function located in the Language section of the Settings window. Refer to the [Settings](#) documentation for more information.
