

JMP Statistical Discovery LLC

JMP[®] Clinical 17
Installation
Validation



Overview

This document explains the steps to properly validate that the core group of JMP Clinical files installed on a PC running the Windows® operating system are complete and correct. You do this by comparing the installed files to a master benchmark file list supplied by JMP Clinical.

Download the script and benchmark files, called `JMPClinical-InstallerValidation-17.exe`, from the JMP website (at <https://www.jmp.com/qualitystatement>). This file is a self-extracting executable that creates a folder of files on your computer. This folder contains the necessary script and benchmark files.

The benchmark files use official checksums to compare your installation to the official JMP Clinical installation. A checksum is a value that allows comparisons of two entities. In this case, we have sets of checksums to compare a select group of files that the JMP Clinical installer installs on your computer.

The core files that your JMP Clinical installer installs on your computer should match the official checksums, included in the benchmark, exactly. If one or more installed file's checksum do not match the expected checksums, the files are listed in the results window for you to review. The comparison also lists core files that were expected to be installed but are missing.

The steps to validate your JMP Clinical installation are simple:

1. The script automatically launches and the window shown in Figure 1.1 appears..
2. Run the Tool.
3. Interpret the Results.

Step 1: Launch the Validation Script

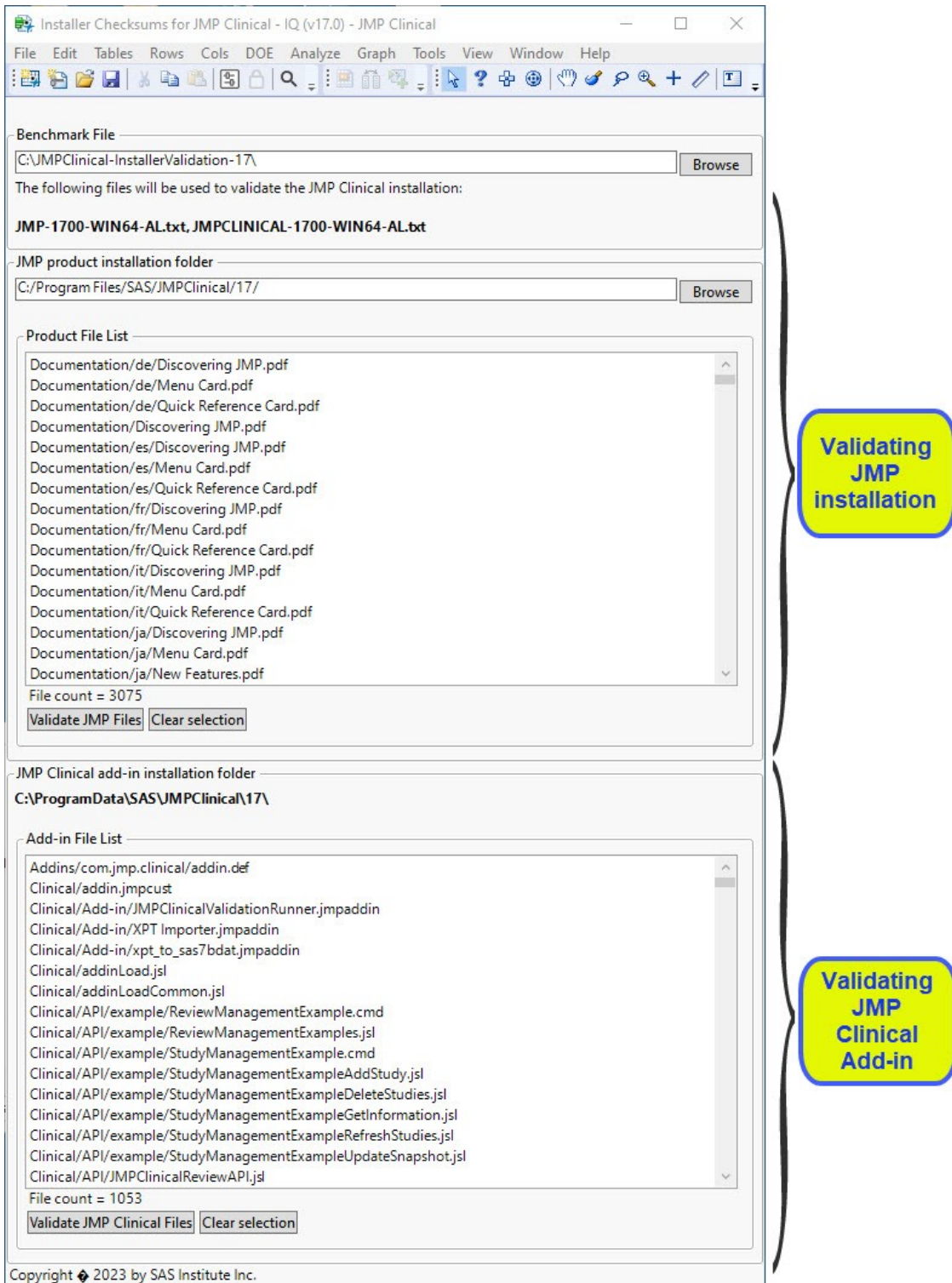
The validation script is named `InstallerIQClinical.jsl`. Since the validation script is a JSL script, you can open the file using one of the following methods:

- Double-click the script in Windows Explorer.
- Open JMP Clinical 17 first and then select **File > Open** to open the script.

The second option is recommended if you installed more than one version of JMP Clinical.

The script automatically launches and the window shown in Figure 1.1 appears.

Figure 1.1 Launching the Validation Script



Step 2: Run the Tool

The benchmark files are included in the folder with the validation script and there is no need for you to select the benchmark files. The tool assumes JMP Clinical has been installed in the default locations (C:\Program Files\SAS\JMPClinical\17\ and C:\ProgramData\SAS\JMPClinical\17\ for JMP Clinical 17) on your computer. You will need to specify the location if you installed JMP Clinical to an alternate location.

Note: You will need to validate both sections - the standard JMP files and the JMP Clinical Add-in files - in order to fully validate your JMP Clinical installation.

1. Specify the Installation Folder

The default installation folder on your Windows computer for JMP Clinical 17 is C:\Program Files\SAS\JMPClinical\17\. If you need to test files installed in a different folder or on a different computer, then click browse and navigate and point to the desired location.

2. Run the Validation Tool

Highlight the JMP Clinical files in the file list that you want to validate, and then click **Validate**.

To analyze *all* files, click **Validate** without selecting any individual files.

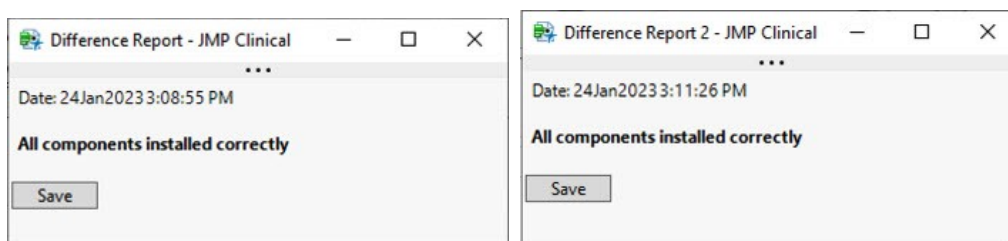
The comparison takes several seconds.

Repeat for the JMP Clinical Add-in files.

Step 3: Interpret the Results

In normal JMP Clinical fashion, the results are displayed in separate JMP Clinical windows; one for the basic JMP components and one for the JMP Clinical Add-in components. If all files match perfectly, then your results window looks like the windows shown in Figure 1.2.

Figure 1.2 The Installation Is Correct



In the example shown above, a computer with a fresh install of JMP Clinical 17.0 was validated.

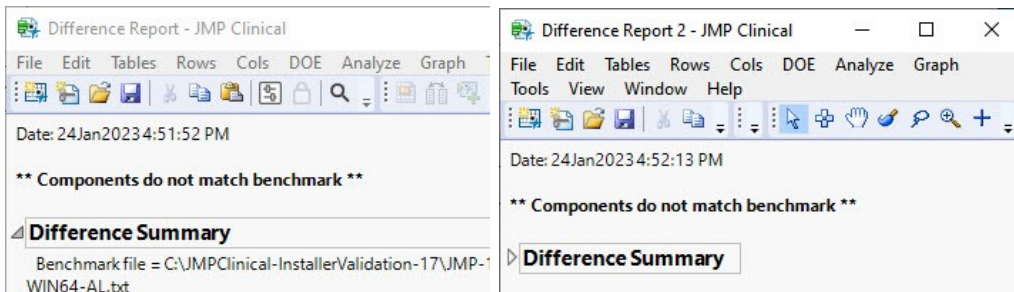
Note: The windows appear the same. To differentiate them, make note of the order in which the sets of components, JMP or Add-in, were validated. The report for the second set has a “2” appended to the label.

To save the information, click **Save** and select a folder. The report file contains a list of files that were installed by JMP Clinical and validated as correct by the benchmark file.

To avoid duplication, the report filename contains the JMP Clinical version and the date and time the file was saved (for example, IQValidJMPComponentsOct0320169-44-05AM.txt).

If file differences between your JMP Clinical installation and the benchmark file are found, then your results windows look like the window in Figure 1.3.

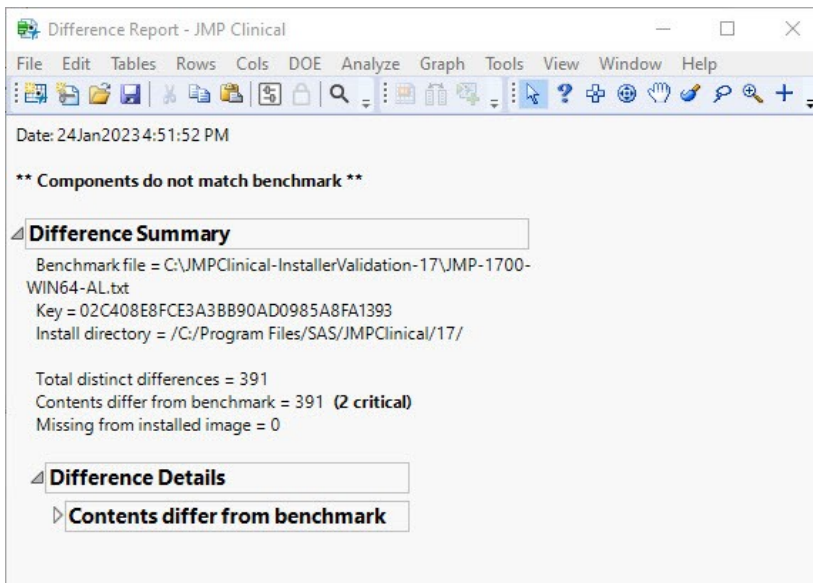
Figure 1.3 The Installation Is Incorrect



In this example, the JMP Clinical 17.0 installation was updated to JMP Clinical 17.1.

Click the disclosure icon for **Difference Summary** to see the full report. See Figure 1.4.

Figure 1.4 The Difference Summary Report for the JMP components

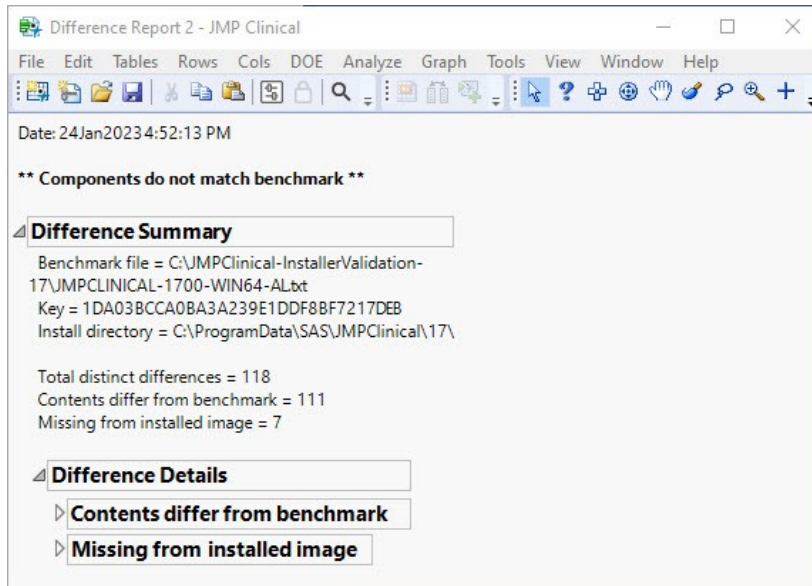


This report shows that 391 files differ from what was expected but that no files are marked as missing.

Notice that two of these file differences are marked as critical. Also note that the benchmark filename appears at the top of the Difference Summary.

A similar result is seen for the JMP Clinical Add-in .

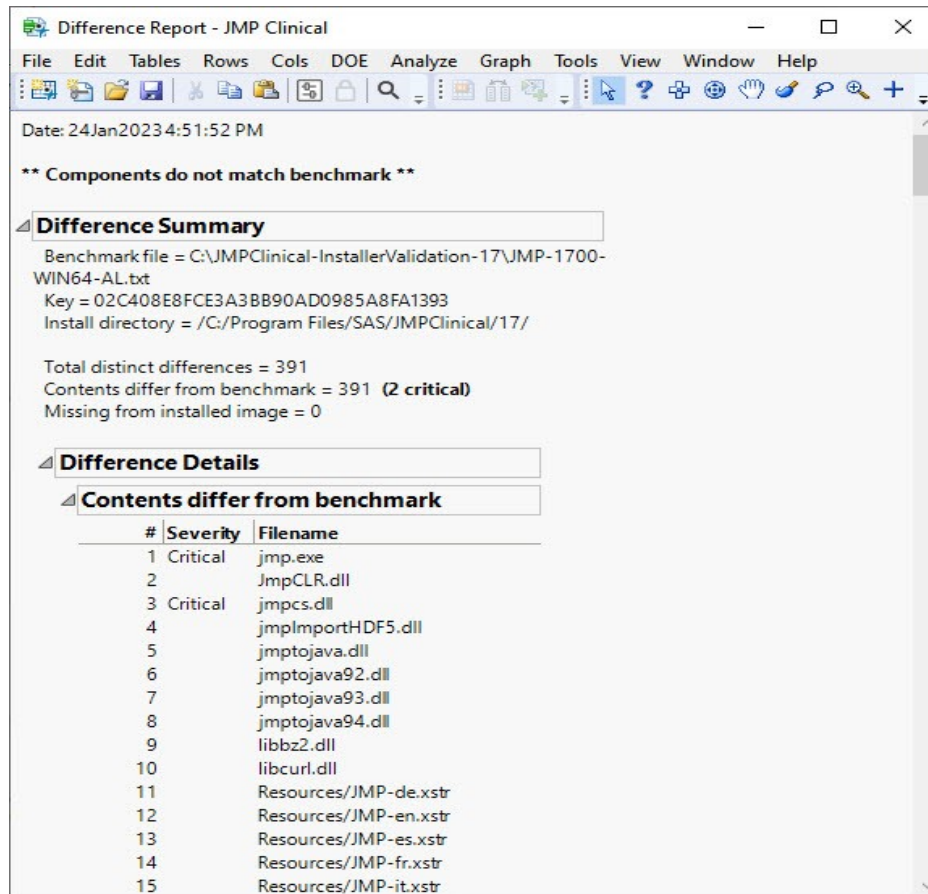
Figure 1.5 The Difference Summary Report for the Clinical Add-in components



This report shows that 118 files differ from what was expected and that 7 files are marked as missing.

Files Are Marked as Different

Click the disclosure icon for **Contents differ from benchmark** to see a list of files that are different from what was expected. Figure 1.6 shows that report.

Figure 1.6 Difference Details: JMP Contents differ from benchmark Report

Files listed here are installed files that have a checksum that does not match the checksum of the file that was used by the installer. Files can differ for several reasons:

- You pointed to an incorrect benchmark file.
- The JMP Clinical installation is not correct.
- Files listed here were corrupted during the installation process.
- Files from a previous installation of JMP or JMP Clinical still remain on your computer.

First, ensure that you used the proper benchmark file. If you did, then you should consider uninstalling and then re-installing JMP Clinical, as follows:

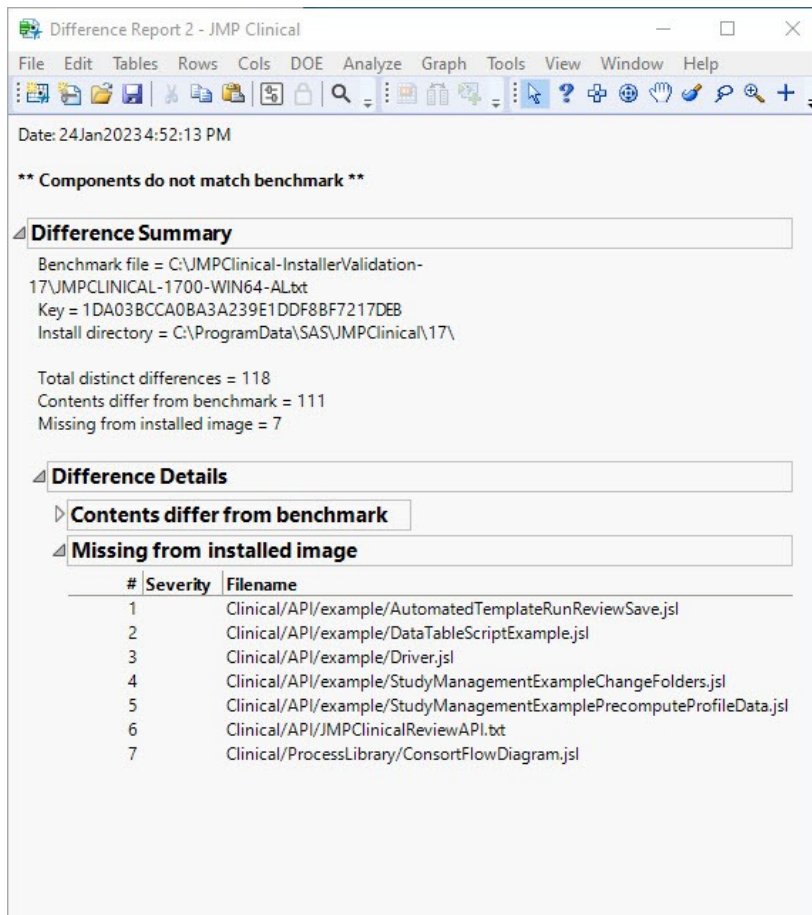
1. Uninstall JMP Clinical using the Windows **Add or Remove Programs** utility.
2. Delete any remaining files that were installed by JMP Clinical by deleting the installation folder and all its contents. The default folder is located in C:\Program Files\SAS\JMP\17.
3. Re-install JMP Clinical.

Notice that the `jmp.exe` file and some other files are noted as **Critical**. Some files are noted as critical because they are essential to the proper execution of JMP Clinical. For example, the JMP Clinical executable file is critical, but a sample data file would not be noted as critical.

Files Are Marked as Missing

Click the disclosure icon for **Missing from Installed Image** to see a list of files that are missing from your JMP Clinical installation. Figure 1.7 shows that report.

Figure 1.7 Missing Details: JMP Clinical Contents missing from benchmark Report



Seven files specified in the benchmark file are missing from the current JMP Clinical installation.

If you any files are listed as missing from the installation, and you selected the correct benchmark file, consider re-installing JMP Clinical.

Technical Support

If you have questions about how to use this validation script or how to interpret results, please contact JMP Technical Support at jmp.com/support.

Note: Before contacting JMP Technical Support for assistance, ensure that you used the correct benchmark file.