

# JMP Clinical 7 Silent Installation

This document provides instructions for performing a silent installation of JMP Clinical 7 on a Windows 10 computer that either lacks any SAS products or has JMP Clinical 6.1 only<sup>1</sup>, installed.

**Summary Procedure.** (Detailed instructions for each step are listed below.)

- I. Create response files on a master computer:  
Create the silent installation template called *response file* on the *master*<sup>2</sup> computer. This file is used to for install JMP Clinical 7 from the installation depot on the shared folder to the *users' individual* computers
  
- II. Silent installation on the client computers  
Install JMP Clinical 7 on the clients according to the response file from the same installation depot on the shared folder.

## Detailed instructions:

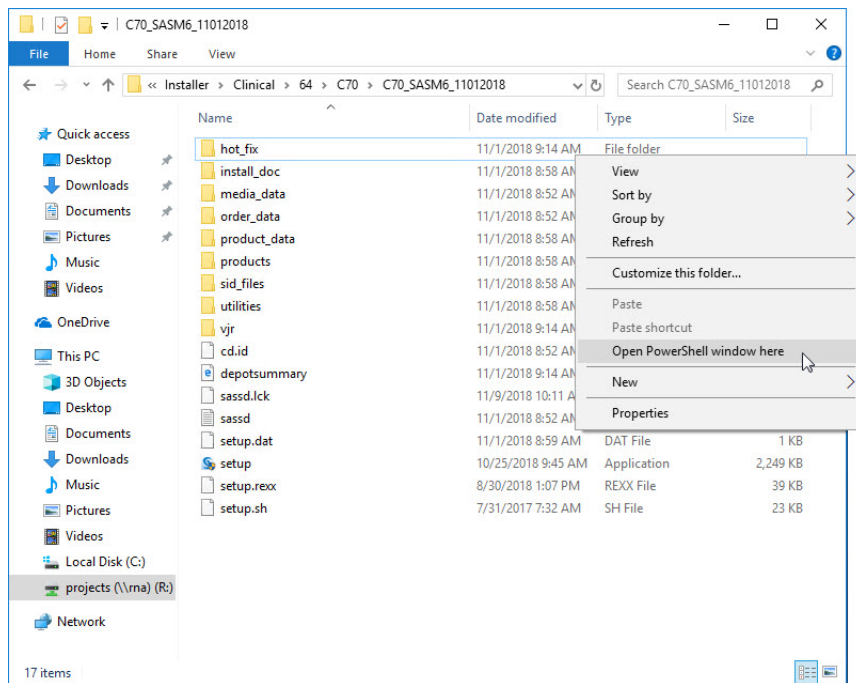
### I. Creating the response files on the master computer:

- A. Open the JMP Clinical depot in a shared folder on the master computer.
  
- A. Open the depot folder. While pressing the **Shift** key on the keyboard, right click on the blank space in the depot. You must do these actions simultaneously. A menu opens.

---

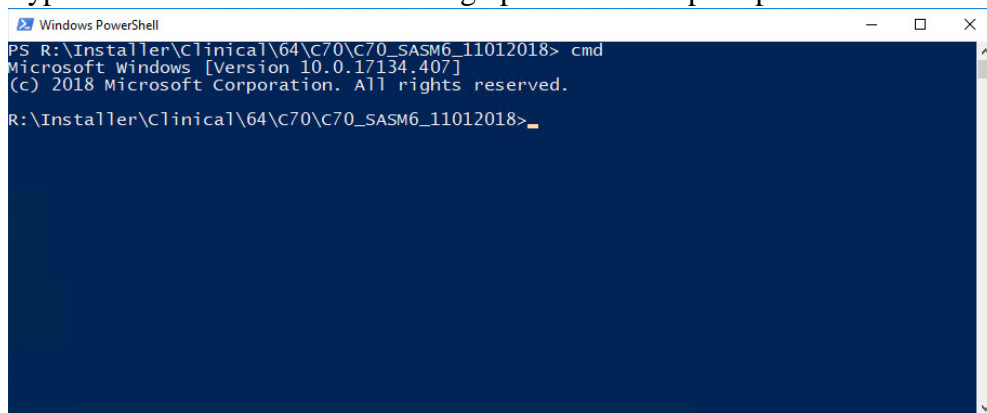
<sup>1</sup> **Note:** We recommend that you uninstall JMP Clinical 6.1 on all computers before installing JMP Clinical 7. However, JMP Clinical 6.1 and JMP Clinical 7 can co-exist on the same computer.

<sup>2</sup> For these instructions, *master* refers to the computer serving as the source computer containing JMP Clinical files that are being pushed. *Users' computers* refers to the computers receiving the JMP Clinical installation.



B. Click on “**Open PowerShell window here**” (highlighted above) to open the PowerShell window<sup>3</sup>.

C. Type `cmd.exe` and hit **Enter** to bring up a Command prompt.



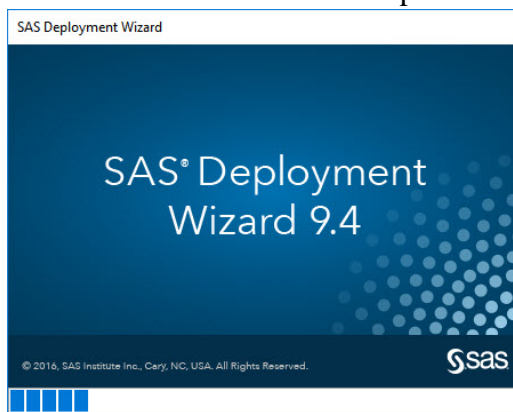
D. Type `setup -record` and hit **Enter**.

<sup>3</sup> If you are installing JMP Clinical on a Windows 7 machine, you will see the **Open command window here** option instead of Open Power Shell window here. Select the **Open command window here** option, skip step C and proceed directly to step D. All other steps are the same.

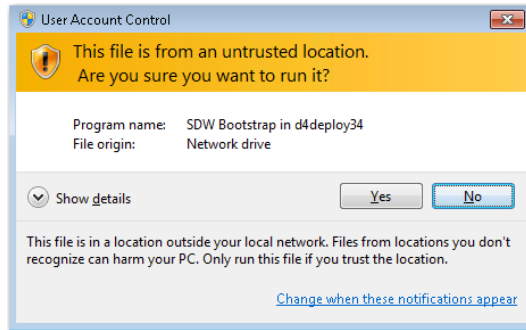
```
Windows PowerShell
PS R:\Installer\Clinical\64\C70\C70_SASM6_11012018> cmd
Microsoft Windows [Version 10.0.17134.407]
(c) 2018 Microsoft Corporation. All rights reserved.

R:\Installer\Clinical\64\C70\C70_SASM6_11012018>setup -record
R:\Installer\Clinical\64\C70\C70_SASM6_11012018>
```

E. The SAS installation Wizard opens.<sup>4</sup>

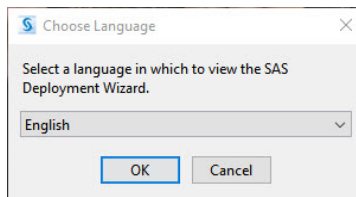


F. Click **OK**.



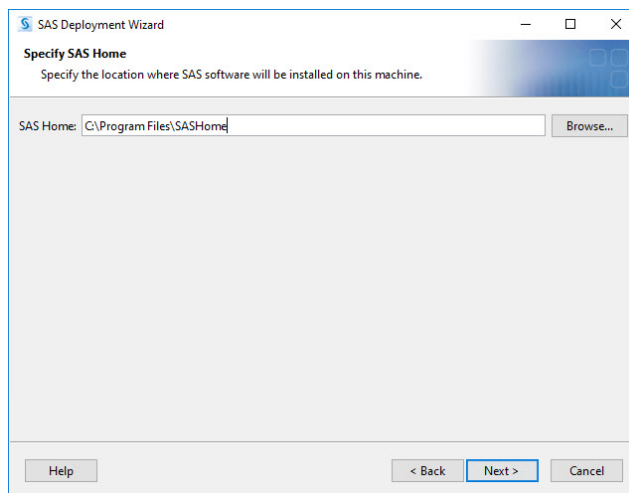
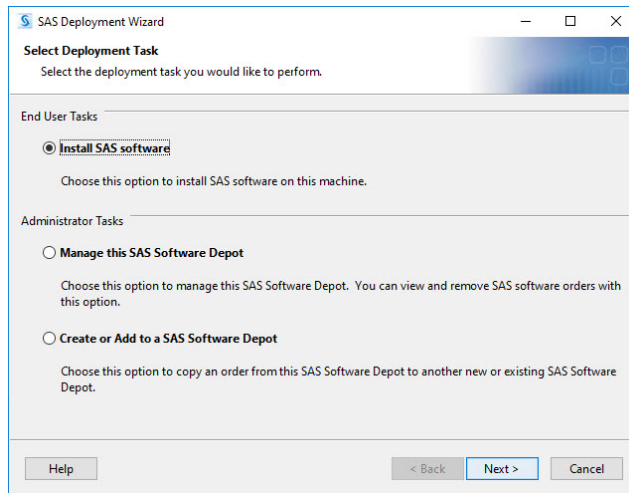
**Note:** This window may not appear on some computers.

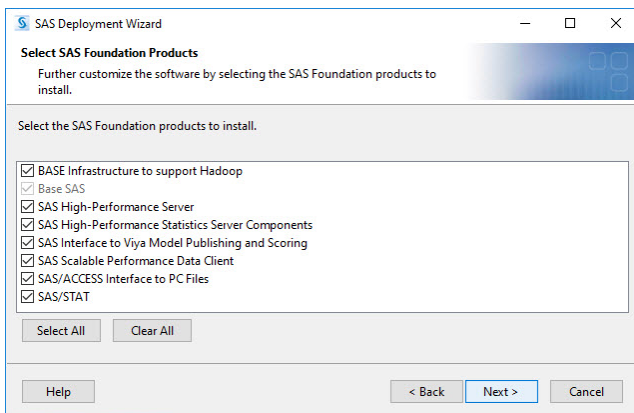
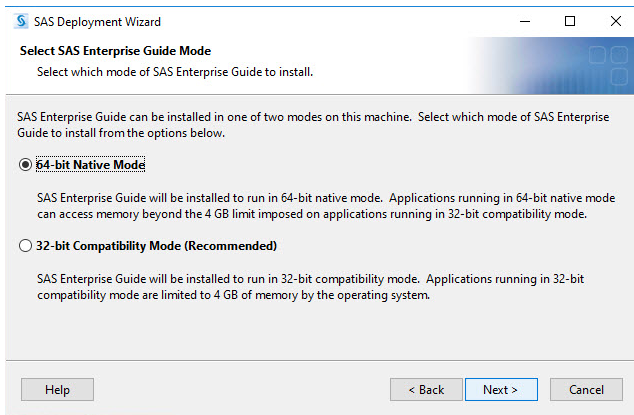
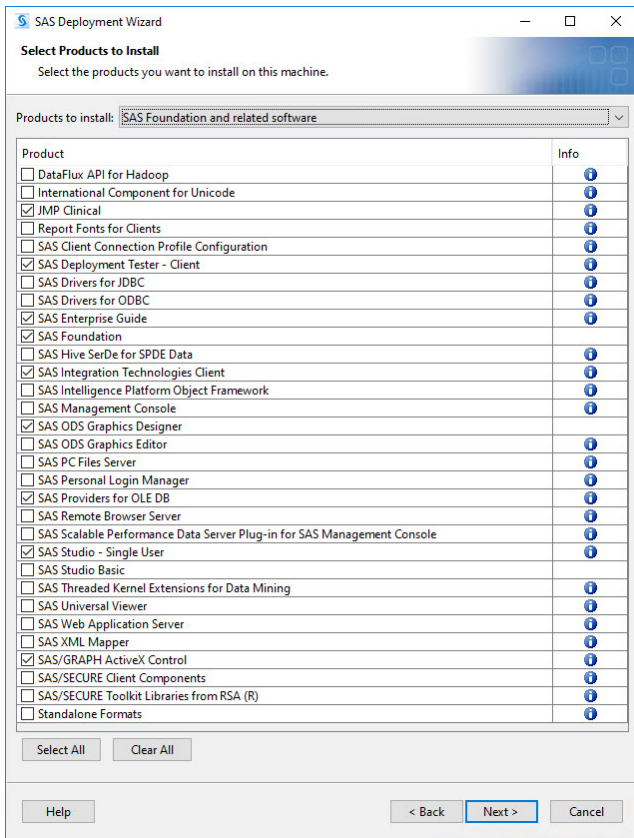
G. Click **OK**.

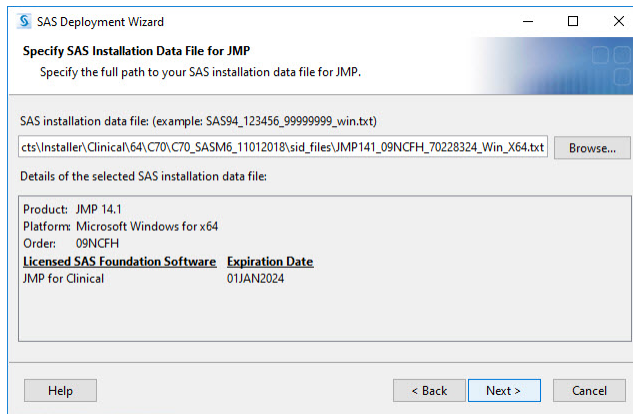
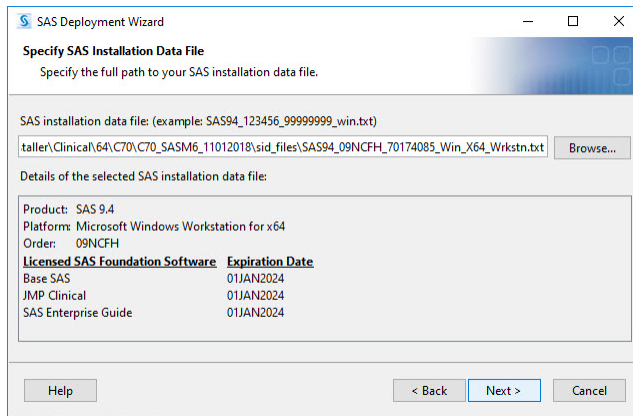


<sup>4</sup> In this step, you are mimicking the installation process, but you are not doing an actual install. Instead, your responses to the install prompts are saved to the response file that will be used for the silent installs on the users' computers.

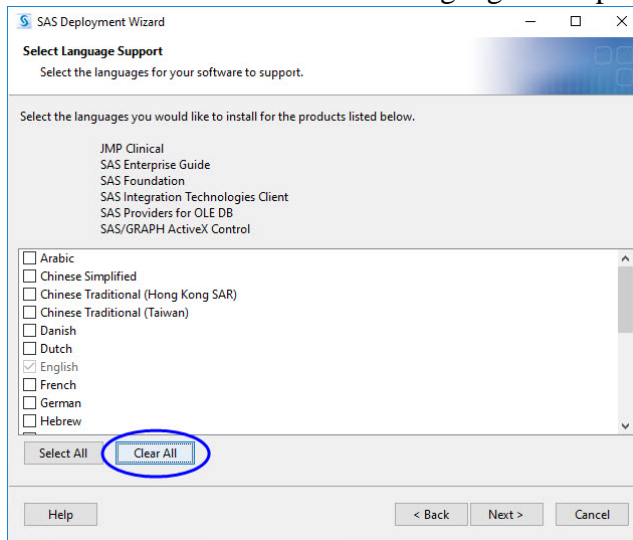
H. Several windows open in succession, Click **Next** on each window to continue with the installation.



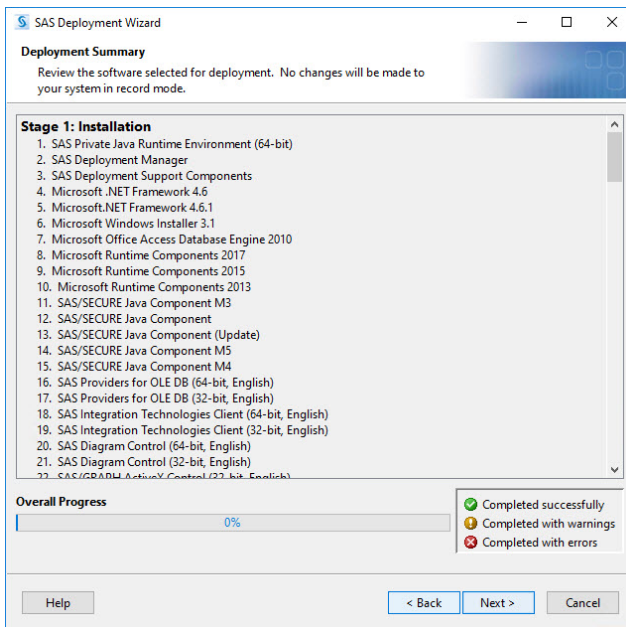
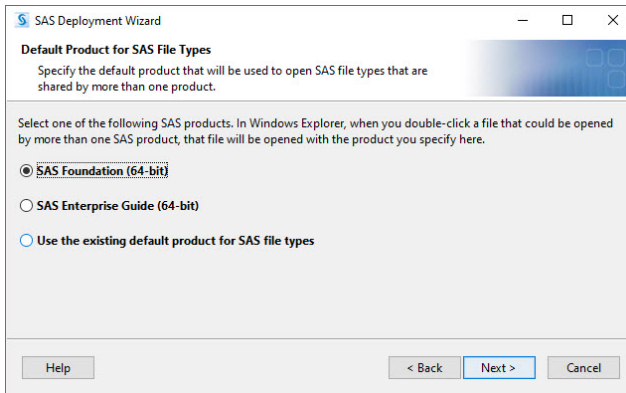
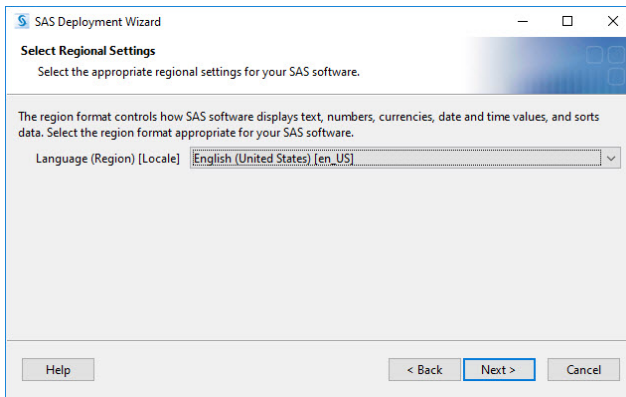


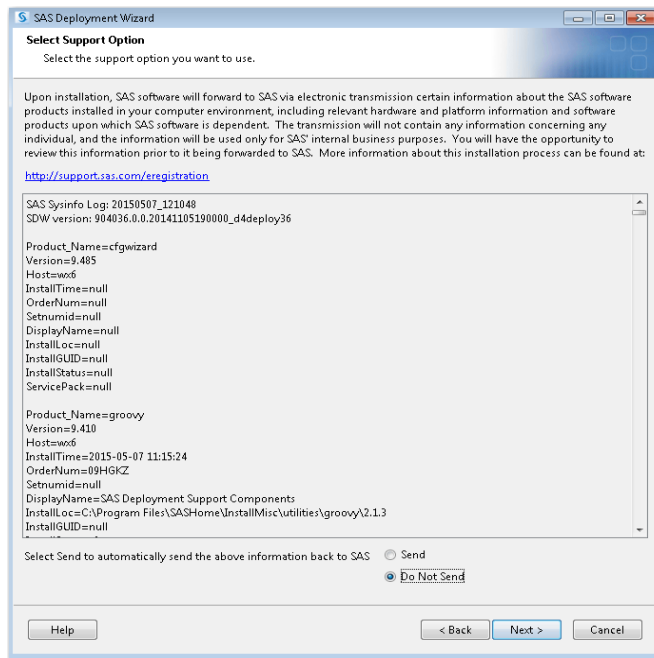


I. Click **Clear All** to deselect all languages except for English. Click **Next**.

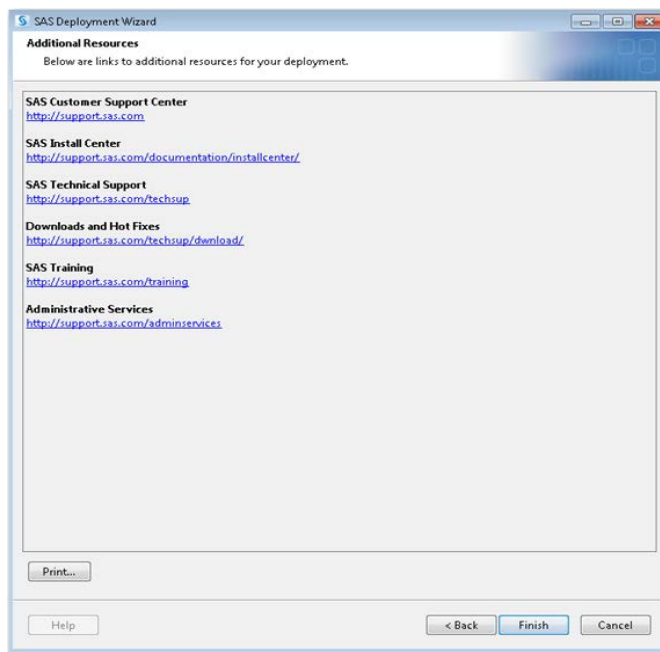


J. Click **Next** on each window to continue with the installation.





K. Click **Finish**.

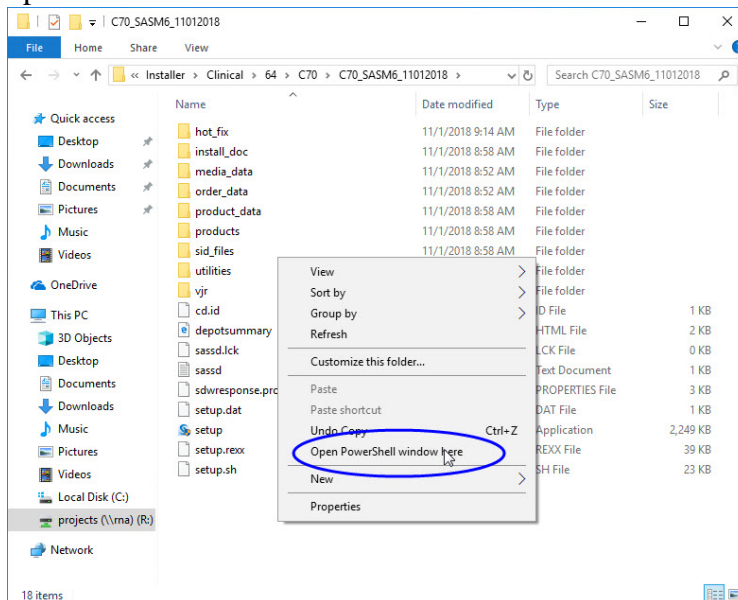


The response file (installation template for silent installation) called *sdwresponse.properties* is saved automatically in user folder **C:\Users\userid\**.

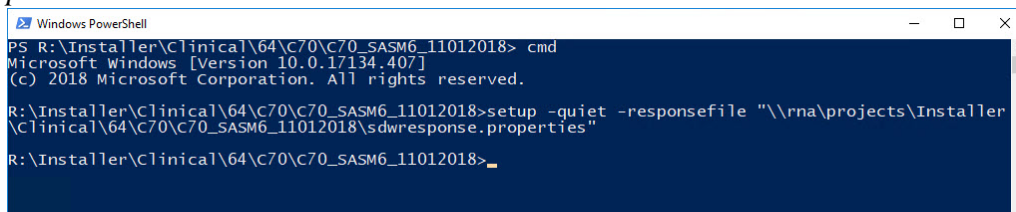
## II. Silent Installation of JMP Clinical 7 on the other computers.



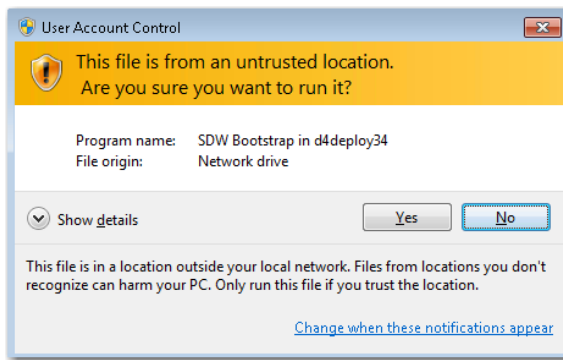
- A. The response file (named *sdwresponse.properties*, by default) must be copied from the master computer's user folder (**C:\Users\userid\**) to a shared folder. . In this example, the response file was copied into the depot.
- B. To perform the silent installation, you must log into each user's computer and navigate to the shared folder containing the installation depot
- C. Open the depot folder. While pressing the **Shift** key on the keyboard, right click on the blank space in the depot. You must do these actions simultaneously. A menu opens.



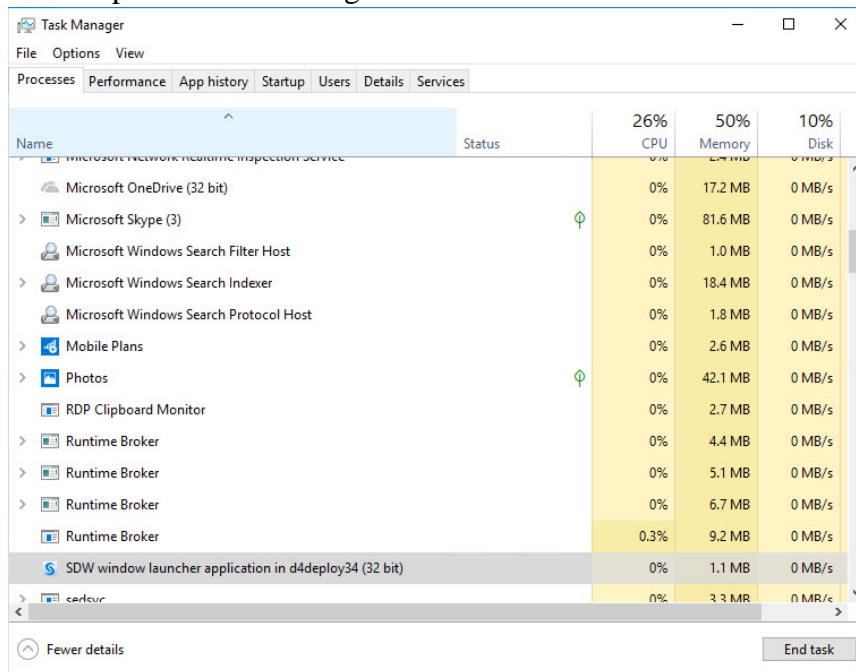
- D. Click on **“Open PowerShell window here”** (highlighted above) to open the PowerShell window.
- E. At the prompt, type `cmd.exe` to open a command prompt.
- F. At the command prompt, type: `setup –quiet –responsefile “full file path to and name of the response file”` and press **Return** to begin the install.  
In this example, the full file path is `\\rna\projects\Installer\Clinical\64\C70\C70_SASM6_11012018\sdwresponse.pro`  
`erties` and the command was entered as shown below:



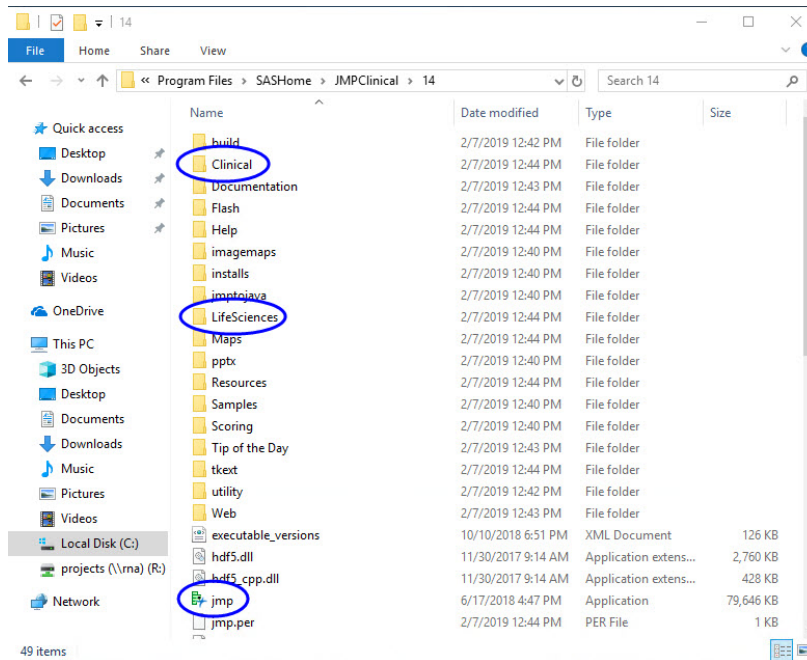
- G. Click **Yes** if the following window appears.



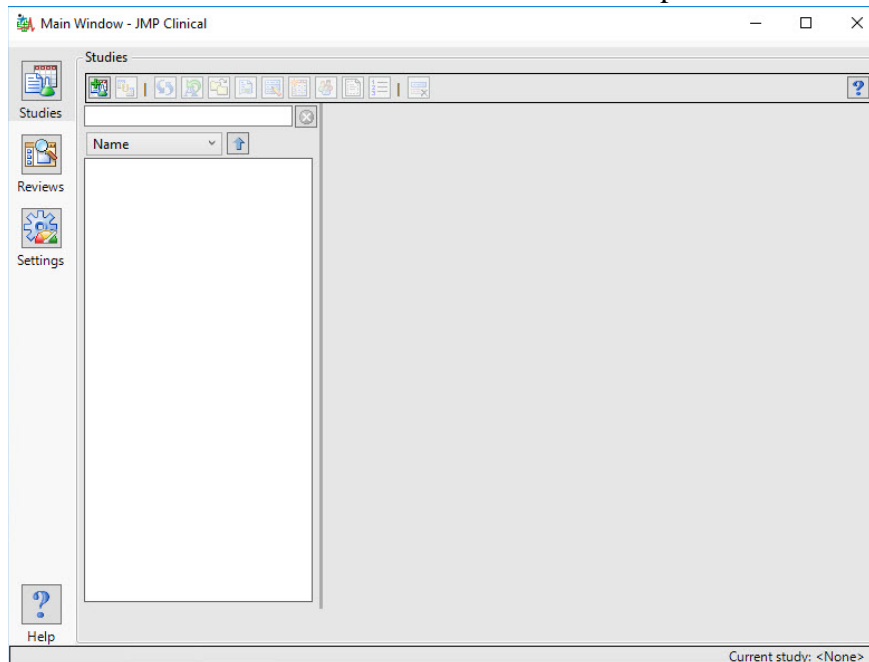
- H. Your JMP Clinical installation will proceed silently. To monitor this installation, right click the Task Bar at the bottom of your desktop and click **Task Manager** to bring up Windows Task Manager. The **SDW window launcher application** shows up in the task manager window.



- I. When SAS update finishes, the **SDW window launcher application** disappears from the Task Manager window.
- J. Verify that JMP Clinical 7 is fully installed on the client:
- The new folder 14 will be added to *C:\Program Files\SASHome\JMPClinical\* if JMP Clinical has been installed in default location.
  - The **jmp.exe**, **Clinical** folder, **LifeSciences** folder and others are in the folder **14**.



iii. Click **Start** -> **SAS** -> **JMP Clinical 7** to open JMP Clinical<sup>5</sup>.



iv. You can get the details installation information from the DeploymentSummary.html from the following folder  
**C:\ProgramFiles\SASHome\InstallMisc\InstallLogs.**

<sup>5</sup> **Note:** When you open JMP Clinical for the first time, a JMP script that generates the dialogs for all of the JMP Clinical processes is run by default. This step automatically generates new files. This discrepancy will be found and reported by the SAS Install Qualification Tool 9.4 utility. As a result, if you plan to qualify the JMP Clinical 7 installation (IQ), **you must run the installation qualification before you open JMP Clinical for the first time.**