

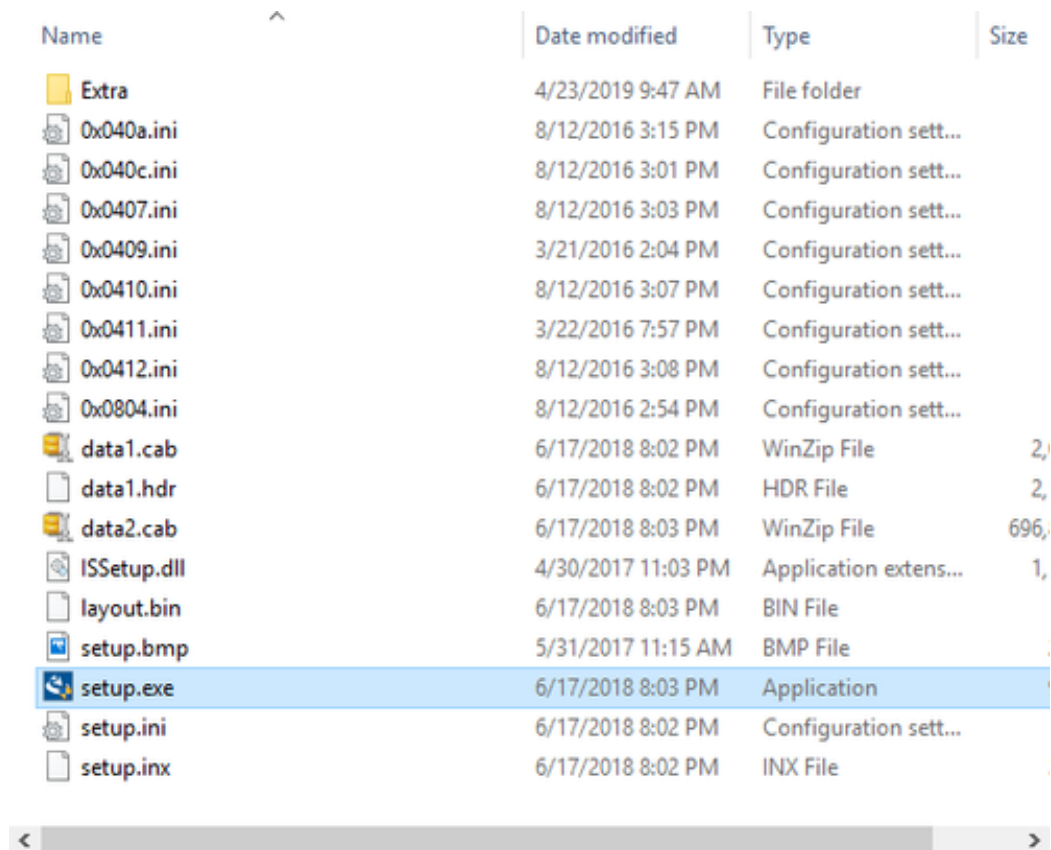
The following is a step-by-step guide for sites that wish to provide their users with an instruction set to install JMP on their machines.

Note: This SAS Note is not intended to address any environmental or system-related issues that might arise during the installation process. If any deviations are encountered during the installation, verify whether you are running a version of JMP supported by your operating system as listed in [JMP System Requirements \(Windows\)](#). Otherwise, contact your IT Administrators. You can also contact JMP Technical Support via [Technical Support Services](#).

1. Download the JMP Software Depot locally on your computer.
2. Install JMP:

Navigate to the **/JMP/JMP/<version>/Windows** directory and **double-click** the JMP installer setup.exe file. Note: For JMP 16.2 and higher, this folder will contain a single-file installer named jmp__version__win.exe.

Note: Right-click the installer file and choose **Run as Administrator** to install JMP with the highest privileges possible. If you are prompted to enter a username and password, contact your IT administrator to help you with the installation.



| Name | Date modified | Type | Size |
|-------------|--------------------|-----------------------|------|
| Extra | 4/23/2019 9:47 AM | File folder | |
| 0x040a.ini | 8/12/2016 3:15 PM | Configuration sett... | |
| 0x040c.ini | 8/12/2016 3:01 PM | Configuration sett... | |
| 0x0407.ini | 8/12/2016 3:03 PM | Configuration sett... | |
| 0x0409.ini | 3/21/2016 2:04 PM | Configuration sett... | |
| 0x0410.ini | 8/12/2016 3:07 PM | Configuration sett... | |
| 0x0411.ini | 3/22/2016 7:57 PM | Configuration sett... | |
| 0x0412.ini | 8/12/2016 3:08 PM | Configuration sett... | |
| 0x0804.ini | 8/12/2016 2:54 PM | Configuration sett... | |
| data1.cab | 6/17/2018 8:02 PM | WinZip File | 2, |
| data1.hdr | 6/17/2018 8:02 PM | HDR File | 2, |
| data2.cab | 6/17/2018 8:03 PM | WinZip File | 696, |
| ISSetup.dll | 4/30/2017 11:03 PM | Application extens... | 1, |
| layout.bin | 6/17/2018 8:03 PM | BIN File | |
| setup.bmp | 5/31/2017 11:15 AM | BMP File | |
| setup.exe | 6/17/2018 8:03 PM | Application | |
| setup.ini | 6/17/2018 8:02 PM | Configuration sett... | |
| setup.inx | 6/17/2018 8:02 PM | INX File | |

Figure 1

- a. Click **Next** at the InstallShield Wizard window.

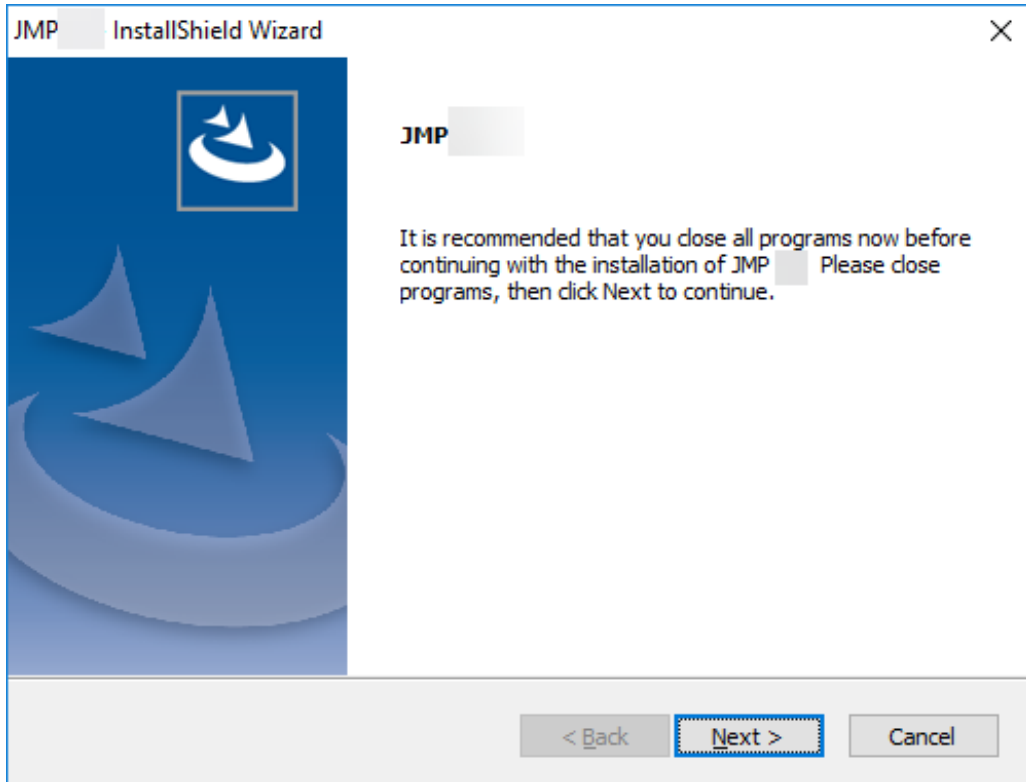


Figure 2

b. Click **Next** at the Choose Destination Location window.

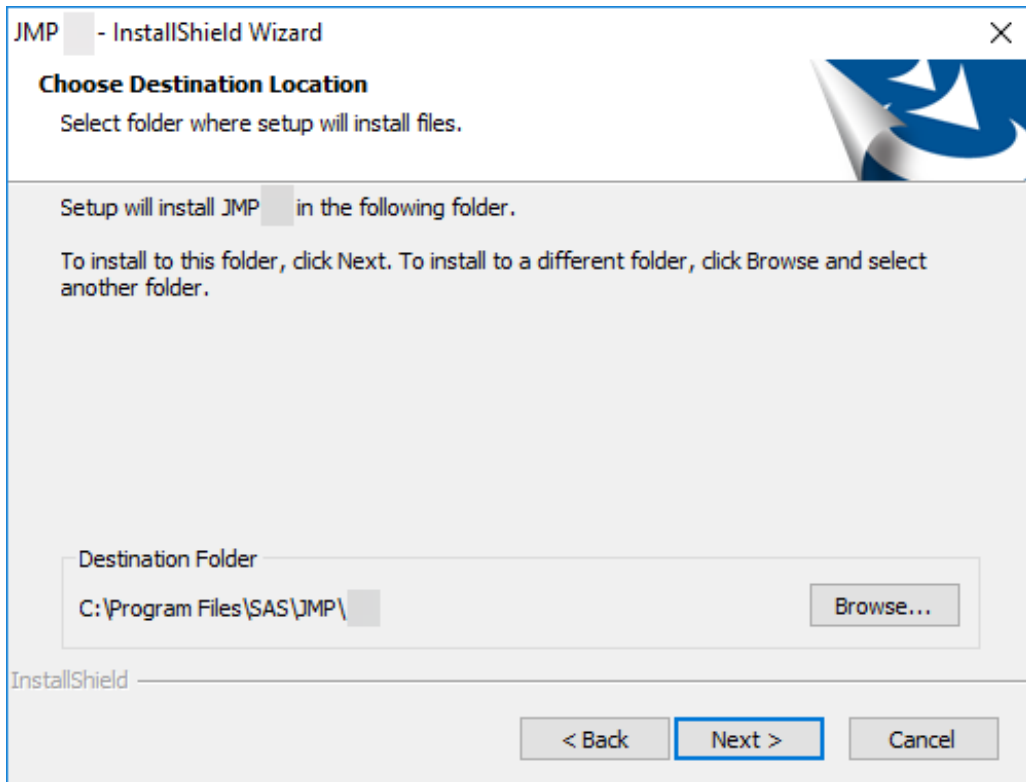


Figure 3

c. Click **Next** at the Installation Options window.

Note: These options are explained below:

- **Language Support Files (Optional)** – Installs the language files needed if you plan to operate JMP under different display languages.
- **Excel Add-in** – Installs the JMP Excel Add-In within Excel.
- **SAS software integration** – Installs the JAVA components needed to connect to a remote SAS server from JMP.

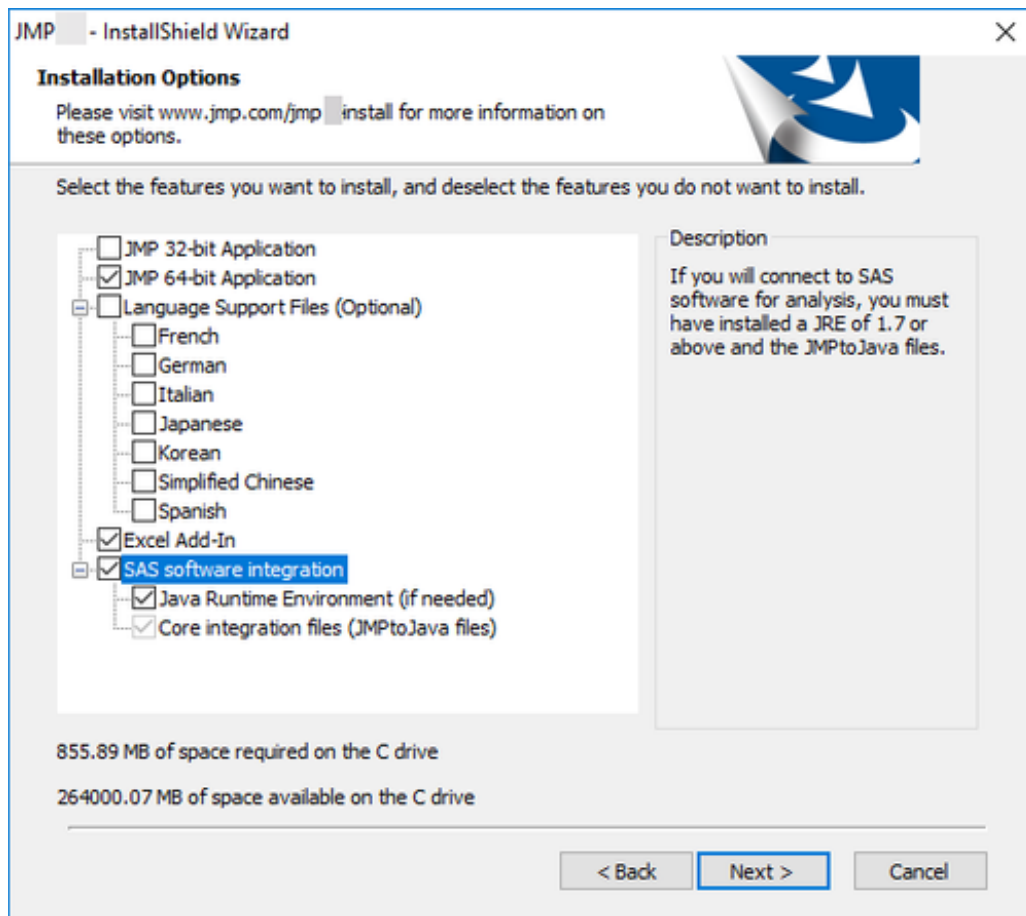


Figure 4

d. Click **Install**.

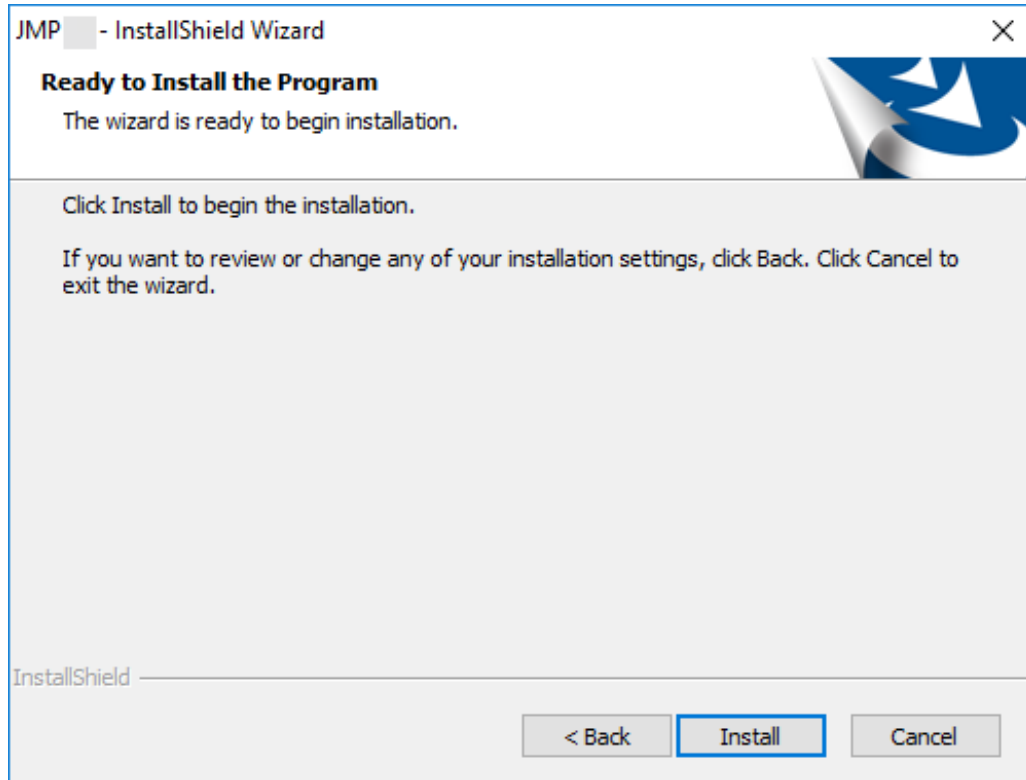


Figure 5

e. Wait for the installation to complete at The InstallShield Wizard is installing JMP <version> window.

Note: JMP installs Microsoft .NET, Microsoft Visual C++ Redistributable(s), and other JMP support files.

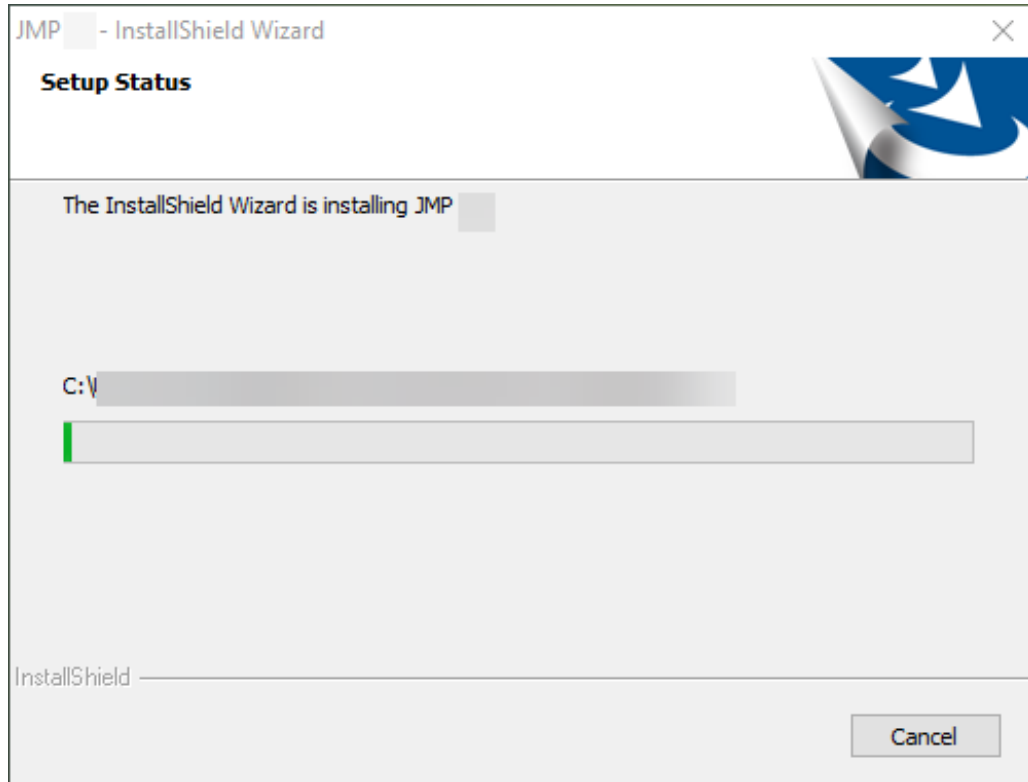


Figure 6

f. At the InstallShield Wizard Complete window, select whether you want to **Create a desktop shortcut** and/or if you want JMP to **Check for JMP software updates**.

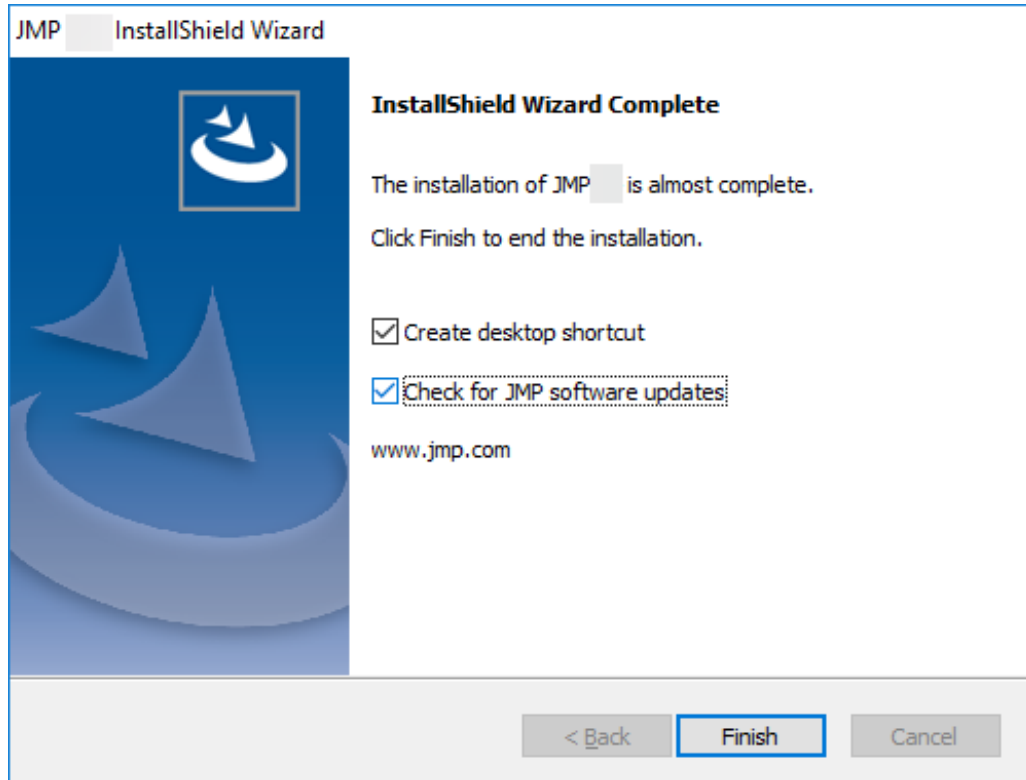


Figure 7

g. Click **Finish**.

3. To launch your JMP *version*, complete these steps:

- a. Navigate to **Start** and select **JMP *version***.
- b. Click the **Wait to Register** or **Register** option.

4. When JMP is opened, it prompts you with the Open License prompt if JMP did not find a valid license in the sid_files (the folder within the folder JMP Software Depot) during the installation.

- a. Click the **Open License** button.
- b. Browse to the save location of the JMP Software Depot and navigate to **/JMP/sid_files/**.
- c. Locate the license `JMPversion_order-number_TS-site-#_Win_X64.txt` file.
- d. Select the file and click **Open**.
- e. JMP should tell you the license was accepted.

5. JMP is now installed and ready for use.