

# Build and activate customized data analytics assets for SK Hynix

2022. 11. 2.

Data Scientist, SK Hynix Inc

Do-Hyeon Jin, Tech Leader



# *Agenda*

- *Introduction*
- *Data Analytics Asset*
- *JMP-Based Analytics Platform*
- *Analytics Competency Training Process and Support*
- *Summary*



# ■ Introduction

## *Presenter*

- Present
  - Data Scientist / SK Hynix Inc.  
Data Analytics, AI Engineering
- History
  - Data Scientist / PUBG(Krafton)
  - Data Scientist, Data Engineer / Coupang
  - Developer, Engineer / Others



*Do-Hyeon Jin and Jon weisz, 2022 USA*

# ■ Introduction

## *SK Hynix*

### ○ Semiconductor Company

- SK Hynix Inc. is a South Korean supplier of dynamic random-access memory (DRAM) chips and flash memory chips. Hynix is the world's second-largest memory chipmaker and the world's third-largest semiconductor company. Founded as Hyundai Electronic Industrial Co., Ltd. In 1983. In 2012, when SK Telecom became its major shareholder, Hynix merged with SK Group.

### ○ With JMP

- 2017 ~ Head office : TELA(Total Employees Capped License Agreement)
- ~2016 : Head office and Other office : copy license



# ■ Data Analytics Asset

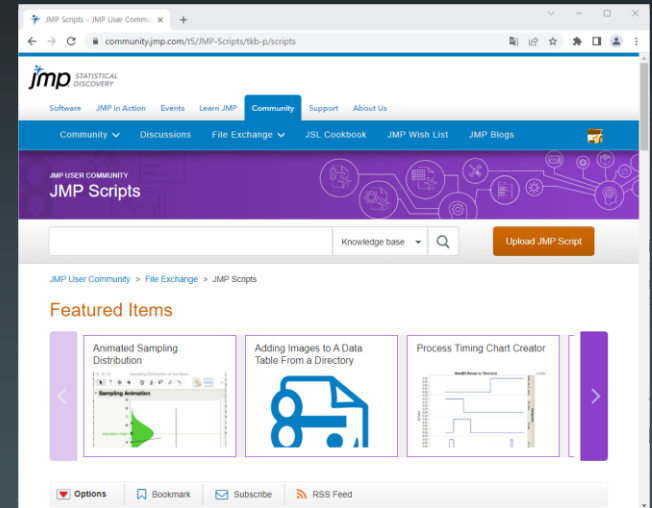
## *People & Culture Asset*

- Talented Citizen Data Scientist & Engineer
  - The huge process of semiconductors and the analysis of various data require a group of experts with competent domain knowledge.
  - A competent group of experts can well define their needs and problems, which is one of the most important parts of the analysis.
- Sharing of analysis know-how
  - An environment and culture where we can share the details of the analysis process and results and develop each other is the most important part.

# ■ Data Analytics Asset

## *Assets to increase analytical productivity*

- Add-In base on JSL
  - Various analysis add-ins that combine data collection, pre-processing and analysis automation functions to easily share results.
- Manual & Reports
  - Documents that summarize the analysis process such as analysis report and initial analysis methodology.



# ■ Data Analytics Asset

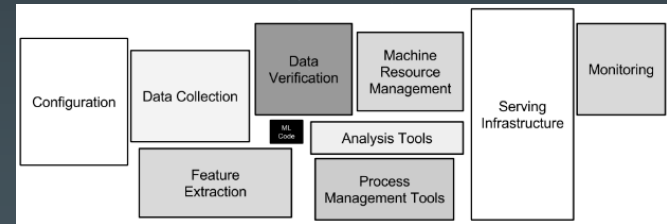
## *Processing & Computing*

### ○ Data Processing Modules

- Structured and unstructured data acquisition, pre/post processing, and data storage for sharing analysis results.
- Management and sharing of processing logic and reference information data for business data marts, etc.

### ○ Computing Infrastructure

- Computing power for data analysis, server and scheduler for automation, batch service, etc.



Google - Hidden Technical Debt in Machine Learning Systems

# JMP-Based Analytics Platform

## App Store

- App Store for contents
  - Our specialized service that anyone can produce and consume content.
  - Implement ready-to-run services by easily discovering and adding with one click without cumbersome installation

[ App Store ] 다양한 고급 분석 Add-In 검색, 추가

The screenshot displays the JMP App Store interface. On the left, there is a 'Tags' sidebar with a search bar and a list of categories such as '분석 (32)', 'Visualization (16)', 'Correlation (6)', 'Probe (5)', 'Response (5)', '데이터 Only (5)', 'Data mining (4)', 'SPM (4)', 'MIDAS (4)', 'SODA (4)', 'WT (4)', 'HHT-CDSEM (3)', 'Happellin (3)', 'Provision (3)', 'RND (3)', 'Source (3)', and '유전자 (3)'. The main area features a grid of application cards, each with a star rating, review count, and '다운로드' (Download) button. The visible cards include: 'Response (Site) Data' (5 stars, 1 review), 'FT Index' (5 stars, 2 reviews), '[CD-SEM] Image Chip Array' (5 stars, 1 review), 'FDC Key Para Selection for Data Mining' (5 stars, 1 review), and 'OES 필름 STA 분석(Data 조희)' (5 stars, 1 review). On the right side, there are three sections: '최근에 등록된 App' (Recently registered apps) listing 'CD-SEM W...', 'FDC Key Pa...', and 'Thickness...'; '다운로드 수가 많은 App' (Most downloaded apps) listing 'WT Map Ch...', 'Trend Tra...', and 'CD-SEM...'; and '리뷰 평점이 높은 App' (High review rating apps) listing 'FDC Key Pa...', 'Thickness...', and 'OES 필름 스...'. The bottom of the interface includes a 'Release Notes (Latest Version 1.2.0.06)' link, 'Copyright © SK Hynix', and navigation links for 'HJMP 가이드', 'Q&A', and '고객 지원'.

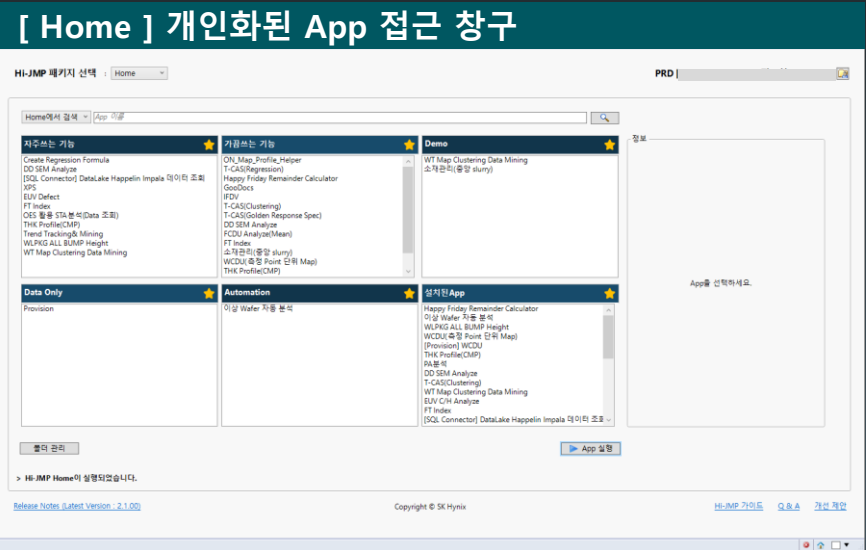
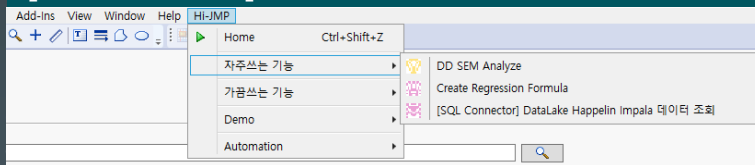


# JMP-Based Analytics Platform

## Personalization & Easy execution

- Custom UI & Quick Menu
  - Individual or group frequently used apps can be managed separately.
  - Can be launched directly from the shortcut menu like an existing installation Add-In

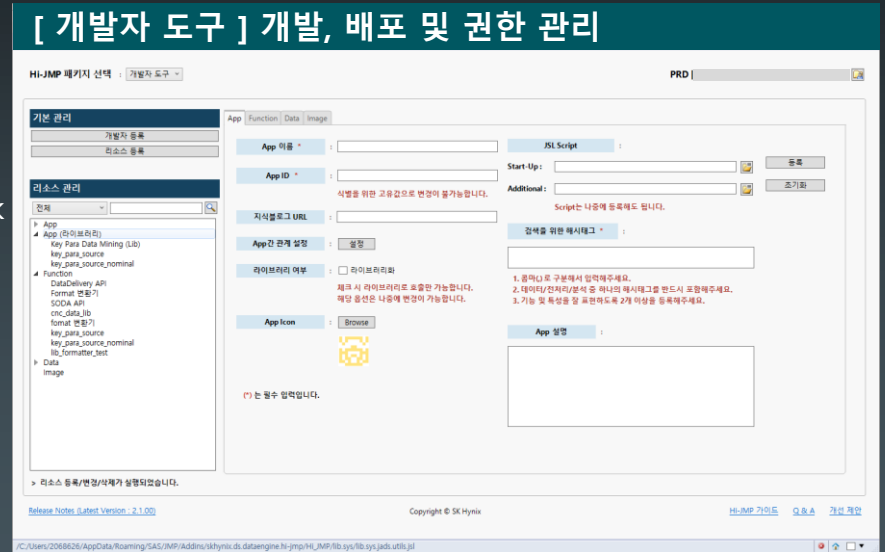
### [ Quick Menu ] 즐겨 찾기 설정을 통한 Quick 실행



# JMP-Based Analytics Platform

## Deployment & Management Tool

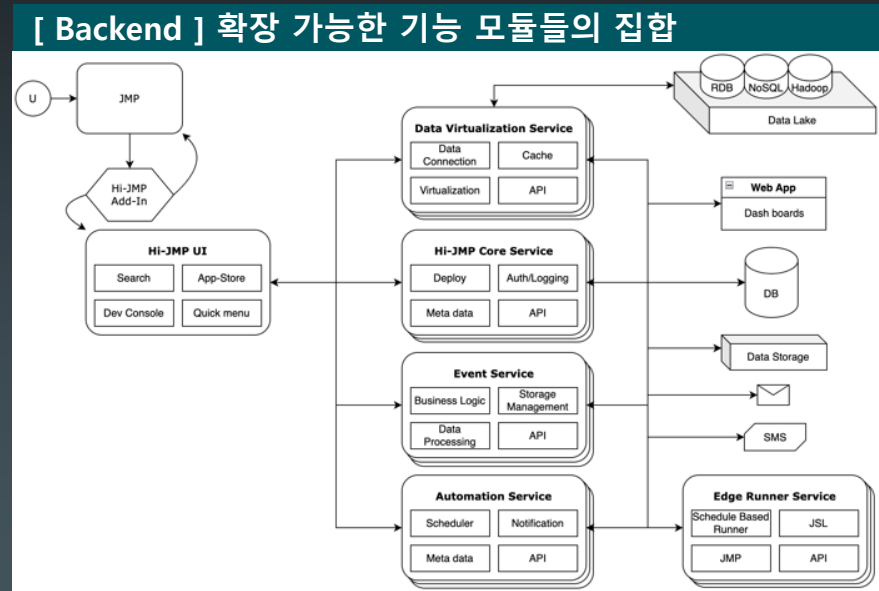
- Automatic deployment and management
  - Easy updates and out-of-the-box configuration using script registration
  - Provision of permission setting, user feedback management and monitoring service
  - Improved reusability through common library and app implementation code sharing



# JMP-Based Analytics Platform

## *Extensible Backend Service*

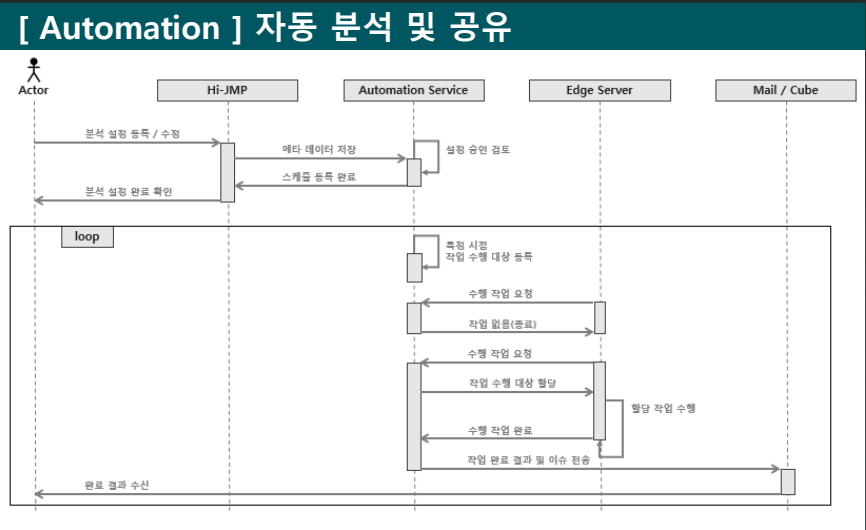
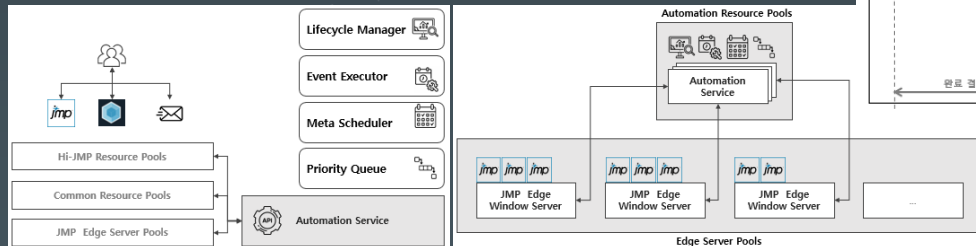
- Cloud & Micro Service Architecture
  - Designed in a structure that can scale out by maximizing internal cloud resources
  - Establishment of database and storage for storage of analysis assets and automatic management of change history
  - Provides data interface for data virtualization and batch service



# JMP-Based Analytics Platform

## Extensible Backend Service

- Automatic analysis and sharing
  - Implement iterative analysis automation
  - Easy web/mail/Message sharing of analysis results and reports
  - Computing service support that overcomes PC resource limitations



# Analytics Competency Training Process and Support

## *Training and Support*

- Operation of in-house JMP council
  - Unified License Renewal and Operation
  - Activate communication between power users and engineers
  - Common library discovery and development support
  - VOC supports

### [ 소통 ] 전사 JMP 협의체 운영 및 지원

#### 모두가 참여 가능한 분석 생산성 개선 아이디어 모집



전사 JMP 활용 데이터 분석 과제 아이디어 상시 모집

- JMP를 활용한 분석 Add-In 및 Custom 데이터 연결 아이디어
- Hi-JMP 플랫폼 및 UI 개선 아이디어



정기 JMP 매거진 참여

- JMP 분석 노하우 기고, 분석 Add-In 소개 및 업그레이드 기능 홍보

[전사 JMP Q&A Cube 채널](#) [바로가기](#)

[JMP 지식 블로그](#) [바로가기](#)

# Analytics Competency Training Process and Support

## Training and Support

### ○ Education and publicity

- Data analysis training support and analysis consulting and mentoring activities
- JSL internal training lectures and integrated technical support
- Analysis tool used for new employee's data analysis training
- Analysis Contest and Best Practice Award
- Publishing a magazine to share know-how



# Summary

- AI service that can be applied to problem solving and actual manufacturing sites
- Accumulation of professional know-how suitable for semiconductor characteristics
- Improving data analysis capabilities required by each member
- Building a culture where analysis know-how is accumulated, shared, and reused to develop synergy
- Discover creative ideas and solutions by encouraging active communication

KOREA 2022

DISCOVERY  
SUMMIT

ONLINE

Thank You

