



# JMP in Manufacturing at Dow: Challenges and Examples

---

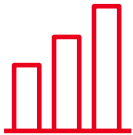
JMP Benelux Users Group

Caterina Rizzo, Senior Analytics Specialist

# This Is Dow

Every answer starts with asking the right question.

At Dow, these questions and the pursuit of solutions for the world's toughest challenges inspire us to collaborate and use our materials science expertise to create **innovative solutions** that transform our world and deliver a sustainable future.



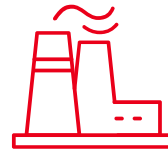
2022 NET SALES

**\$57B**



EMPLOYEES

**~37,800**



MANUFACTURING SITES

**104**



GLOBAL REACH

**31 countries**

in which Dow manufactures products



# Chemometrics, AI and Statistics: Help Dow Make Data-Driven Decisions

## Chemometrics

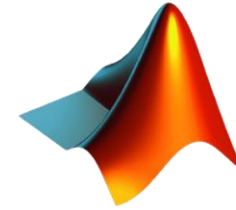
Application of multivariate statistics to process data, partnered with process experts to troubleshoot plant operations.

## Artificial Intelligence (AI)

Application of advanced machine learning techniques on alternative data sources to improve operations.

## Statistics

Application of concepts such as Design of Experiments and Measurement System Analysis etc. as well as statistical training and JMP consultation.



MATLAB



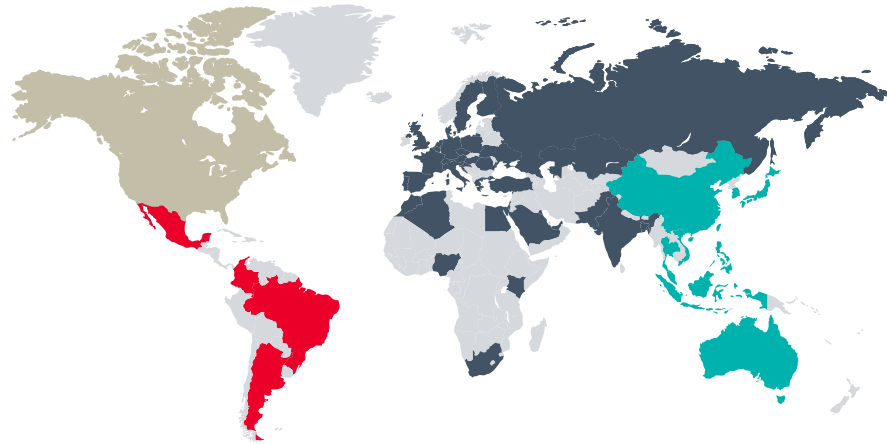
# JMP Reach at Dow

---

- Big focus on digitalization and better use of data in Manufacturing
  - JMP usage in manufacturing: broad population with basic knowledge and few advanced experts
- The future of JMP at Dow lies within Operations/Manufacturing

~1500  
users

60%  
R&D



# JMP usage in Manufacturing: Challenges

---

- While JMP has been in the Dow computing environment for two decades, enforcing it in the manufacturing environment can still face several challenges
  - Resistance to change
  - Integration challenges
  - Scalability
  - Lack of training/time

# Resistance to change

---

- “Excel is not perfect, but it is *good enough*.”
  - Where is the value? JMP UI is not that different from Excel, but JMP functionalities are menu-accessible and far superior
- “JMP is only for advanced users”
  - The value of JMP for the broader manufacturing audience is data cleaning and visualization
- A JMP Champion within each organization is key to break some of these barriers
  - Focus on those who see analytics as a career opportunity

# Integration and Automation

---

- Plethora of specialized tools: why switching to JMP?
  - ‘One platform for all’
- Data connection: “helper scripts” have been developed and deployed as JMP add-in for different data sources

The image shows a screenshot of a software configuration window titled "Configuration". It is divided into three main sections: "Server Config", "Datetime Options", and "Tags".

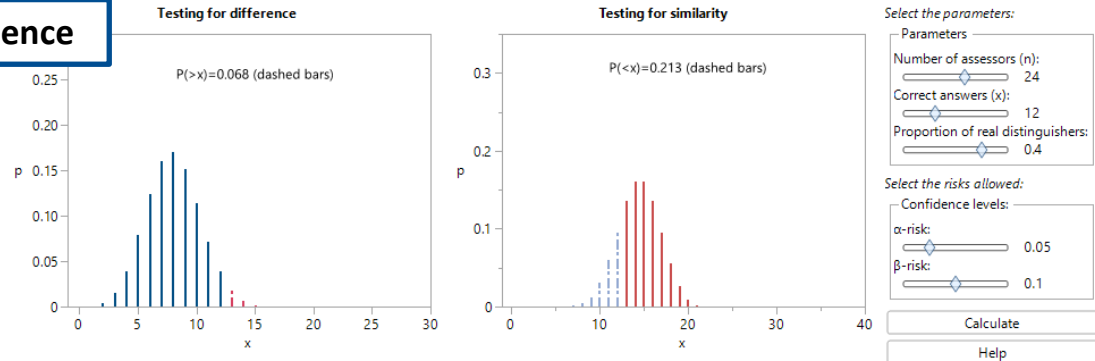
- Server Config:** Contains a dropdown menu with the text "<<select your server>>", a "Find Servers" button, and a "Start Query" button.
- Datetime Options:** Contains two date fields: "Starting Date" with the value "Oct032023 00:00:00" and "Ending Date" with the value "Nov022023 09:23:25". Below these is a "Frequency:" field with the value "1:00:00".
- Tags:** Contains three buttons: "Load Tag File", "Manual Tag Entry", and "Tag Browser".

At the bottom of the window, there is a "Help" button.

# Scaling up, training and supporting plan

- Internal and External Communities of Practice
  - Depot for Dow-built JMP add-in
  - Seminar, training resources, questions, etc.
- Leverage JMP Learning Resources / JMP Inspire Events
  - Regional sessions in the local language
  - Opportunity to get credit within the corporate training platform for STIPS
- Educational/interactive Tools

## Triangle Test for Sensory Science





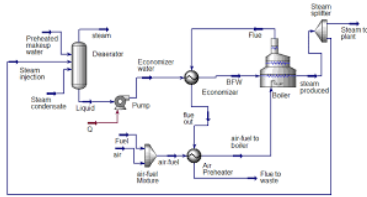
## JMP in Manufacturing at Dow: Success Stories

---

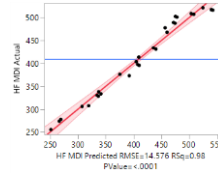
- Surrogate models for mass and energy balances
- Process screening for sample plan optimization

# JMP in Manufacturing at Dow: Success Stories

- Surrogate models for mass and energy balances



DoE



Formula Depot

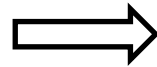
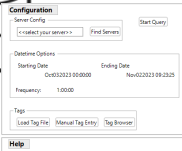


Real-time Optimization

Process Simulation Software

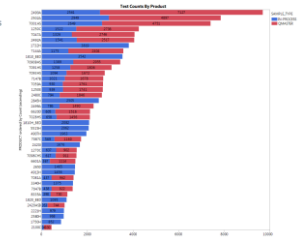
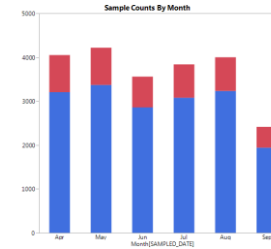
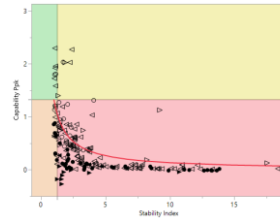
Linear Models  
Nonlinear Models

- Process screening for sample plan optimization



Data import helper scripts

Process Screening





Seek Together™