



**JMP®.** JMP software's built-in features are both accessible to the inexperienced user and sufficiently sophisticated for the advanced. Students use JMP for undergraduate and graduate course work in a range of subjects, including introductory statistical methods, regression, linear models, design of experiments, quality control, reliability, multivariate analysis, data mining and applied forecasting.

**JMP® Pro.** This software contains all the features of JMP, plus modern analytic techniques for data mining, cross-validation, predictive modeling and exact tests. Also, JMP Pro lets you bootstrap any statistic in a report with a single click.

**JMP® for life sciences.** JMP offers two powerful life sciences products dedicated to the statistical analysis of clinical and genomics data. Biologists, biostatisticians, statistical geneticists and students in research organizations use JMP Genomics to uncover meaningful patterns in vast stores of high-throughput genetics, expression, copy number and proteomics data. JMP Clinical can streamline safety reviews during clinical trials.

## JMP® Software: Academic Licensing

From SAS, the leader in software for statistics and analytics

JMP statistical discovery software is a family of SAS products that visually unveils the story behind your data. Academic discounts on departmental and campuswide licenses of JMP software support the use of technology in classrooms, labs, teaching, and research settings.

### Why JMP®?

#### **An excellent teaching resource.**

Most teaching professionals find JMP to be very intuitive, allowing them to spend more time teaching statistics and less time teaching software.

**Easy to use and intuitive.** Students learn JMP quickly.

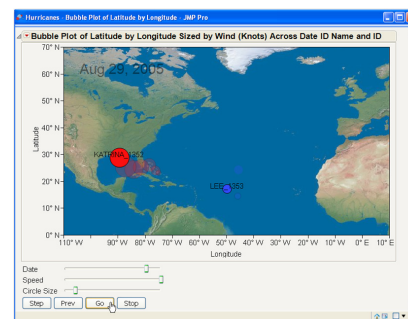
**Visual and interactive.** Interactive graphs always accompany statistics in JMP.

**All-inclusive.** JMP provides a comprehensive set of platforms to perform basic to advanced statistical analyses. There is never a need to buy extra modules.

**Extensible.** You can call on your other favorite software platforms – SAS®, R and Excel – to access any specialized analytic libraries directly from within JMP.

**Windows and Macintosh compatibility\*.** The same version of JMP works with both operating systems natively.

**An easy licensing solution.** JMP is easy to administer with a qualified department or campuswide license. Any number of students, faculty and researchers may install the software in labs and on university and personal



JMP software's combination of visualization and analysis tools are easy to access and use.

computers for academic purposes – all for one low annual fee. Individual and student licenses are also available.

### Get JMP®

A number of licensing options are available for the products in the JMP family.

#### **Campuswide Site License**

Supports an unlimited number of users across a campus for use in classrooms, labs, teaching and research settings. An annual license, so the latest version of JMP is always available automatically. Convenient and centralized billing and payment.

#### **JMP Academic Suite**

- JMP and JMP Pro (Windows and Macintosh).
- Unlimited use of JMP e-course from SAS.
- Add JMP Clinical or JMP Genomics at a discounted price.
- The most economical way to license JMP for a site.

#### **JMP Genomics or JMP Clinical**

- License available for JMP Genomics or Clinical individually.

\* JMP and JMP Pro can be installed on 32- and 64-bit Windows and Macintosh systems. JMP Clinical and Genomics can be installed on 32- and 64-bit Windows systems. For complete system requirements see: [jmp.com/support/system\\_requirements\\_jmp.shtml](http://jmp.com/support/system_requirements_jmp.shtml)

## Department Site License

Supports an unlimited number of users within an academic department for use in classrooms, labs, teaching and research settings. JMP Academic Suite, JMP Genomics or JMP Clinical licenses are available.

## K-12 site license

JMP® Student Edition is perfect for secondary school AP statistics courses that need a multiyear student license. This streamlined, feature-limited version of JMP comes with a 60-month license.

- Unlimited use in classrooms and on-site academic computers.
- Very low cost; one-time, five-year fee.

## Individual/personal licenses Perpetual

The best single-user resource for academic research.

- One-time cost for a version that never expires.
- Discounted version upgrades.

## Single-user six- or 12-month student license

Convenient for college students who need their own copy of JMP, or who are enrolled in a course where JMP is used.

- Full-feature edition of JMP.
- Short-term license with a student's budget in mind.
- Convenient electronic download.
- Students may relicense to extend their use of JMP during their academic tenure.
- Available through e-academy at [onthehub.com/jmp](http://onthehub.com/jmp).

## JMP® Student Edition

Can be bundled with textbooks from major college publishers.

- Faculty members may contact their textbook publisher's representative directly and request a bundle ISBN number to provide to the bookstore.

## In addition to software, a JMP® license comes with:

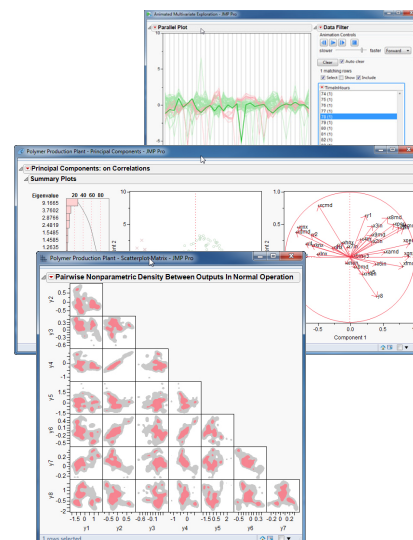
- Award-winning 24/7 SAS technical support (does not apply to e-academy or JMP Student Edition).
- Free and automatic maintenance updates during the term of the license.
- A broad array of free teaching and learning resources, including on-site workshops, on-demand webcasts, podcasts, a case-study library and a learning library.

## SAS® OnDemand for Academics

Faculty members and students who license and use JMP in a course can also use SAS OnDemand for Academics at no additional cost when a course is registered (export limitations apply). Users connect to a SAS-hosted server over the Web to access SAS software.

- Easily take advantage of SAS software's advanced analytics.
- Secure your data through hosted, back-end processing.

Register and gain access to SAS software through JMP. Limitations and availability apply. More information is available at [support.sas.com/ondemand/jmp.html](http://support.sas.com/ondemand/jmp.html).



JMP provides a complete array of statistical and visualization platforms all in one package.

## Add JMP® Clinical or JMP® Genomics to your JMP® Academic Suite license.

Qualified institutions will enjoy a discount for unlimited access to these life sciences products.

Let us help you identify the options that will work best for you.

[jmp.com/academic/licensing](http://jmp.com/academic/licensing)



SAS Institute Inc. World Headquarters

+1 919 677 8000

JMP is a software solution from SAS. To learn more about SAS, visit [sas.com](http://sas.com). For JMP sales in the US and Canada, call 877 594 6567 or go to [jmp.com](http://jmp.com)

SAS and all other SAS Institute Inc. product or service names are registered trademarks or trademarks of SAS Institute Inc. in the USA and other countries. © indicates USA registration. Other brand and product names are trademarks of their respective companies. 103388\_S91304.0512